

## T7PX/T7XC Software Update Method

Whenever improvements and new functions are available, the software of your T7PX/T7XC radio transmitter can be updated easily online free of charge. The updated software file will be shown on our website. You can download it and make a copy on your microSD card. Below is the procedure for the software update.

### Procedure for the software update

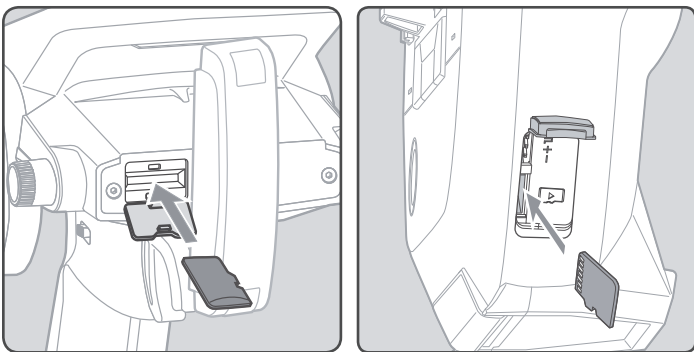
**Caution:** Before you update the software, the battery that is connected to the T7PX/T7XC should be fully charged.

**Note:** During the software update, the model data that is stored in the T7PX/T7XC should be kept without any change. (NOT erased and NOT changed.) However, for your safety, making a backup of your model data before the software update is highly recommended.

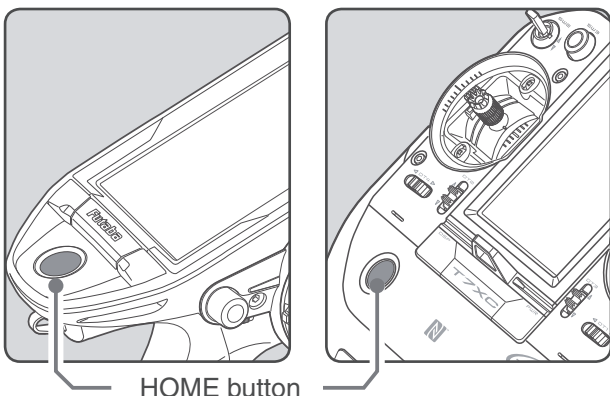
1. Download the zip file of the update data from our website.
2. Extract the zip file on your computer.
3. The "FUTABA" folder will be created on your computer.
4. Copy the "FUTABA" folder onto your microSD card.

**Note:** If the microSD card has already had "another FUTABA" folder before you make a copy, the "FUTABA" folder is **OVERWRITTEN**.

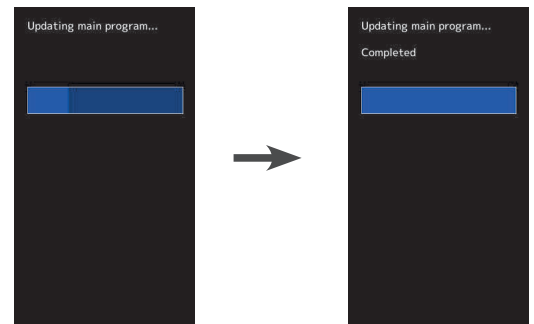
5. Insert the microSD card with "FUTABA" folder that contained the update software into the SD card slot on your T7PX/T7XC radio transmitter.



6. Turn on the transmitter power while pressing down the "HOME" button. The update screen appears on the LCD display of your T7PX/T7XC and the software update is started.



7. When the software update is completed, "Completed" message is shown on the LCD display of your T7PX/T7XC. (See attached picture.)



8. Turn off the power switch of your T7PX/T7XC and remove the microSD card from the card slot.

#### Possible Problems

When one of the error messages shown below appears on the LCD screen of your T7PX/T7XC, the software update will not be completed.

#### "Low battery."

Software update is postponed because of low battery. Retry the software update after the battery is recharged.

#### "Update file not found."

The T7PX/T7XC cannot find the update file on the microSD card. Check to be sure all the update files have been copied onto the microSD card.

#### "Broken file."

The T7PX/T7XC detects the update file error. The update file may be broken or for another transmitter.

#### "Write error."

The software update procedure is stopped for an unknown reason. Contact your local service center when this error message appears on the LCD screen of your T7PX/T7XC.

The condition function has been enhanced.

- \* Up to 4 conditions can be used.
- \* It is possible to name the condition.
- \* Switching or condition can be switched by switch or trim / dial.

## Condition function ON/OFF

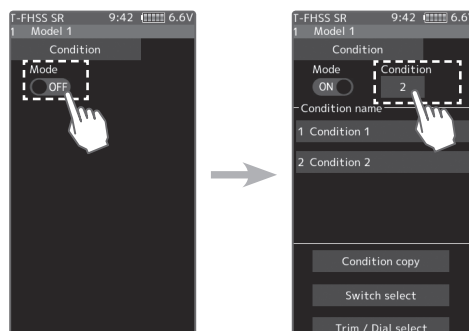
**1** Display "Condition" screen from "Linkage menu" or "User menu".

**2** (Function ON/OFF)

Tap mode (ON) or (OFF) to select ON / OFF.

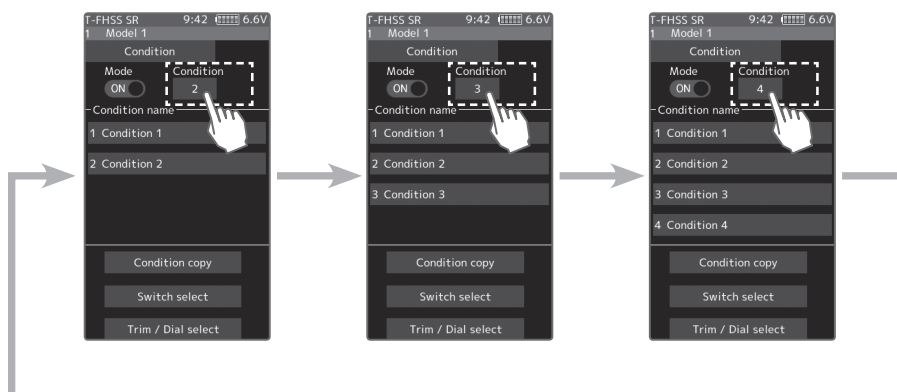
"OFF" :Function OFF

"ON" :Function ON



**3** Tap the [Condition] button to change the number of available conditions.

A list of condition numbers is displayed in the "Condition name" group box. Up to 4 conditions can be used.



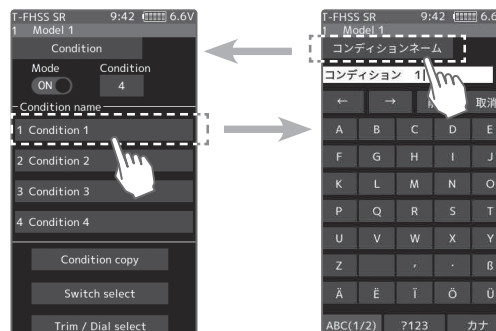
## Condition name

This function allows you to assign a fifteen character name to each condition.

**1** From the "Condition Name" list, tap the condition button whose name you want to change.

**2** Since the condition name setting screen is displayed, edit the name.

**3** Tap the title button [Condition name] to return to the condition screen.



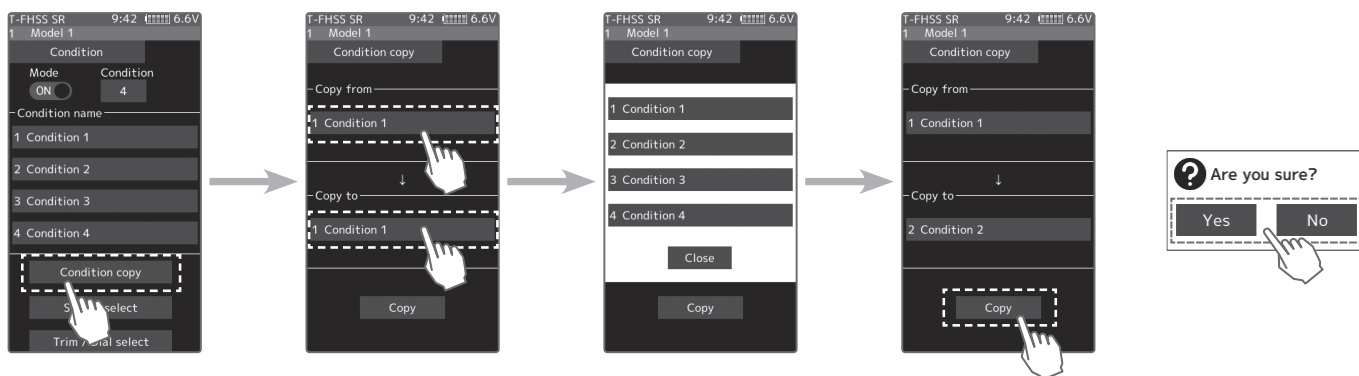
## Condition copy

This function copies condition data to other conditions.

**1** Tap the [copy condition] button. The condition copy screen will be displayed.

**2** Tap the "Copy from" [Condition name], select the condition list so it will tap. The source condition is selected and the list is closed. In the same way, use the "Copy to" condition button to select the copy destination condition.

- Tap the [Copy], The confirmation message "Are you sure" appears. To execute copy, tap [Yes] and to cancel copy, select [No]. When the copy destination condition name becomes the same name as the copy source, copying is complete.

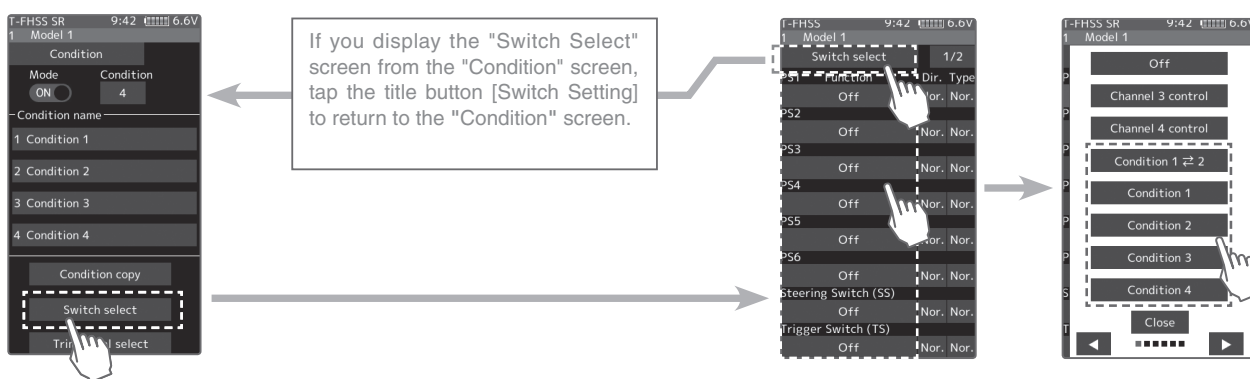


### Condition change switch setting

This function sets the switch to change the condition. There are two kinds of change methods as follows.

- With one switch, change the Condition 1 and Condition 2.
- Assign a condition to each switch, and operate the switch to change the condition.

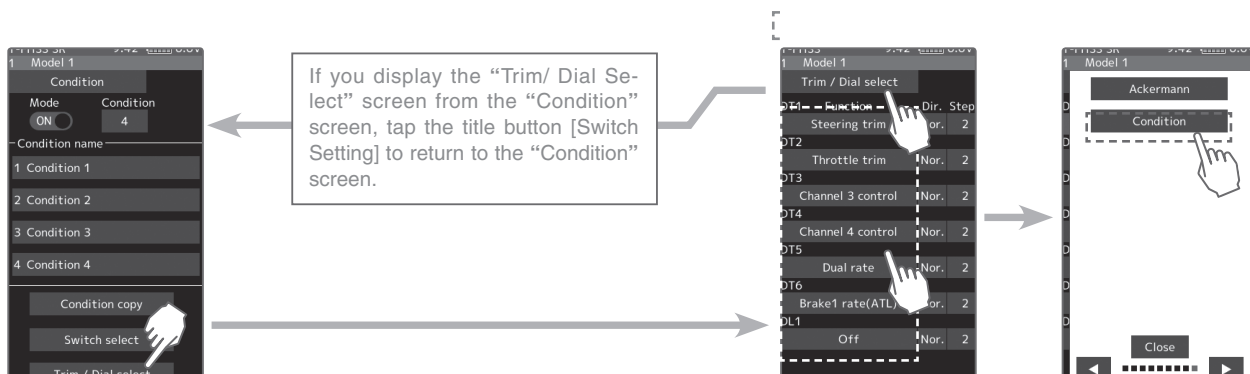
- Tap the [Switch select] button to display a "Switch select" screen. (The "Switch select" screen can also be displayed from the "Linkage menu" or the "User menu".)
- Tap the switch you want to use to display the function selection screen. By selecting [Condition 1 ⇔ 2] from the function list, you can change Condition 1 and Condition 2 by operating the switch. If you select [Condition 1] to [Condition 4] for each switch, you can change to the condition assigned by each switch operation.



### Condition change trim / dial setting

This function can change the condition by trim or dial. By operating Trim or Dial, you can change the condition as Condition 1 → 2 → 3 → 4 or 4 → 3 → 2 → 1.

- Tap the [Trim / Dial select] button to display the "Trim / Dial select" screen. (The "Trim / Dial select" screen can also be displayed from the "Linkage menu" or the "User menu".)
- Tap the trim or dial you want to use to display the function selection screen. Since the function selection screen is displayed, select [Condition] from the function list.



## Additional function / KYOSHO Mini-Z Evo (Receiver)

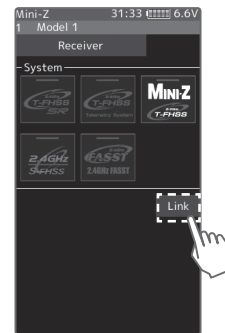
It corresponds to the Kyosho Mini-Z EVO dedicated receiver RA-42. For further instruction, Please also read the instruction manual of RA-42.

### How to Link

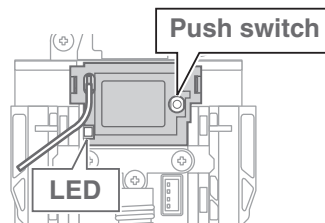
- 1 Display "Receiver setting" screen from "Linkage menu" or "User menu".  
Set the system to "Mini-Z T-FHSS".  
Bring the transmitter and the receiver close to each other, within 20 inches (half meter).  
Turn on the receiver.



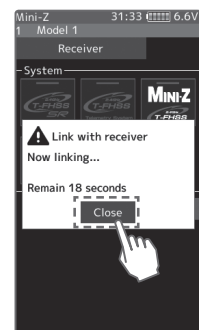
- 2 Touch [Link] on the transmitter T7PX / T7XC screen, you will hear a chime sound and T7PX / T7XC will enter the link mode for 20 seconds.



- 3 Push the receiver side push switch for about 2 seconds or more.

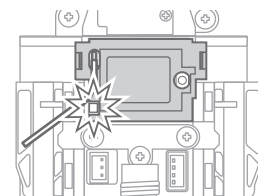


- 4 Release the Link SW.  
LED 2 seconds solid → Blink  
Touch the [Close] button on the link screen of the transmitter to cancel the link mode.



- 5 Completed with LED solid the receiver.

- If there are many T-FHSS Mini-Z systems turned on in close proximity, your receiver might have difficulty establishing a link to your transmitter. This is a rare occurrence. However, should another T-FHSS Mini-Z transmitter/receiver be linking at the same time, your receiver could link to the wrong transmitter. This is very dangerous if you do not notice this situation. In order to avoid the problem, we strongly recommend you to double check whether your receiver is really under control by your transmitter, using and confirm the operation.



## SR mode compatible servo addition

The following servos support SR mode setting.

S3470SV / S9370SV / S9470SV / S9570SV / S9571SV / S9670SV

\* Only "SR type 1" can be selected for SR type.

When the trim or the dial is operated, the value of the function is displayed for a few seconds at the top of the screen.

Example:  
The trim/dial is assigned to the gyro mixing function.

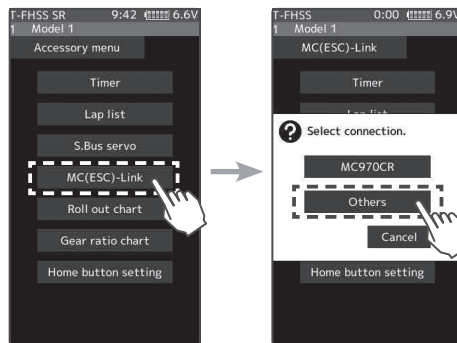


The value of the gyro gain is indicated to the top of the screen for several seconds.

## Additional function / MC (ESC) Link (MC970CR)

The MC970CR has been added to the "MC (ESC) link" function of Futaba ESC parameter change.

\*MC970CR is available only in the Japanese market. (As of Sep 2018)



For ESC in the past, please choose Other.

### \*Improvement in SR mode setting\*

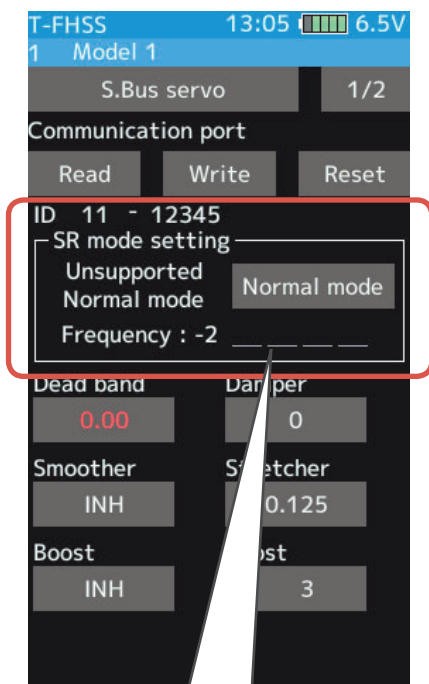
Even if a servo that is not compatible with SR mode is connected to a T7PX/T7XC with software V2.0 to V2.2, the transmitter can switch the servo to SR mode, but the incompatible servo will not work and the servo program is damaged when you forcibly switch the servo to SR mode. Thus, the servo does not work. **So, please never switch when you connect an incompatible servo to SR mode.**

The software has been improved so that a transmitter prohibits you from switching an incompatible servo to SR mode.

#### Before the improvement

"S.Bus servo" screen of version V2.0 to V2.2

Even if a servo that is not compatible with SR mode is connected, you can switch the servo to SR mode, but the servo will not work and damaged if you switch it to SR mode



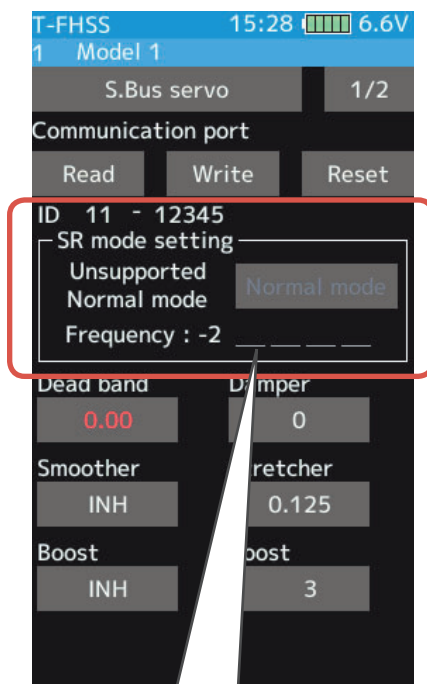
When connecting a servo that is not compatible with SR mode, a message "Unsupported" is displayed on the screen, but you can operate the SR mode select button.

**Please never select the SR mode setting when you see "Unsupported" on the display.**

#### After the improvement

"S.Bus servo" screen of version V2.3 or later and V1.0 to V1.4.

If you connect a servo that is not compatible with SR mode, the screen forbids you switching it to SR mode.



When connecting a servo that is not compatible with SR mode, you cannot operate the SR mode switching button.

Added support to change SR mode of HPS-CB700.

Futaba S.BUS / S.BUS 2 The "S. BUS servo" function (Instruction manual page 135) that allows you to change the servo parameters can now be set up wirelessly by connecting to the receiver.

\* A receiver compatible with the wireless setting function is required. (As of April 2018, R334SBS / R334SBS-E is compatible with wireless setting. Please update the previous receiver to version 2.0 or later.)

## ⚠ WARNING

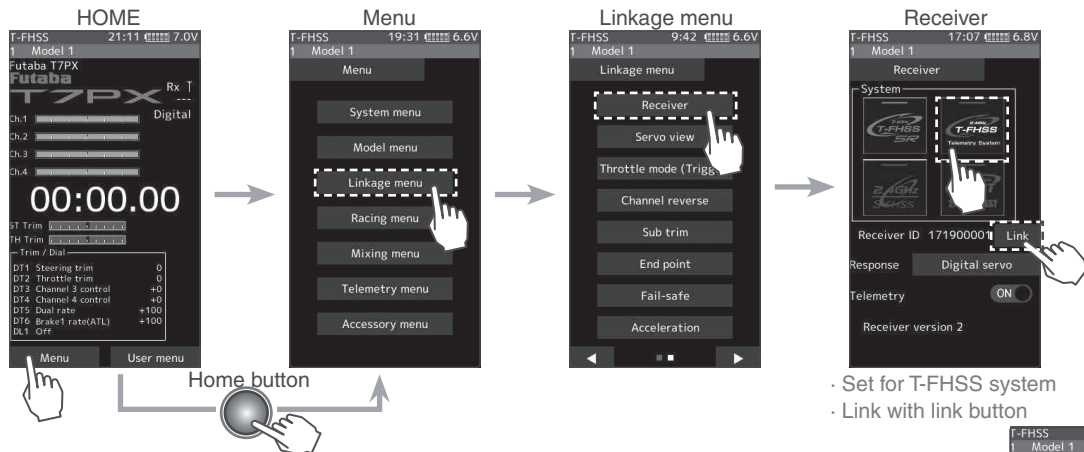
❗ In the wireless setting, there is a danger that a car (boat) can become unexpectedly uncontrollable, because the servo temporarily stops working during communication. For safety, in case of electric car (boat), please set with driving wheel (boat propeller) not touching the road surface (water surface). Also, in the case of an internal combustion engine car (boat), be sure to stop the engine before entering wireless set-up mode.

## NOTE:

- For safety reasons, it is not possible to change between normal mode and SR mode with wireless setting. To change the mode, connect the servo to the communication port and switch. However, for servos set to SR mode, SR1 / SR2 / SR3 can be switched by wireless setting.
- Wireless setting cannot be used if a device that converts signals such as gyro and FSU (Failsafe Unit) etc. are connected between the receiver and the servo.

## How to check the receiver software version

1 Set the RF type to T-FHSS system type and link transmitter and receiver. (Refer to instruction manual pages 37 to 38)



2 When the link is completed, power cycle the receiver.

You can check the software version on the receiver screen.

After confirmation, reconfigure the system to be used as per normal and link again.

Please update the receiver to below version 2.0.

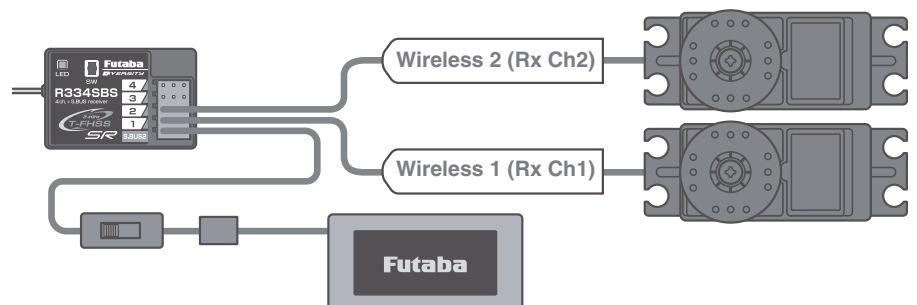


## Connection channel of servo to make wireless setting

Connect the S. BUS / S. BUS 2 servo as shown in the figure and the receiver battery to the channel of the receiver.

### - Reference

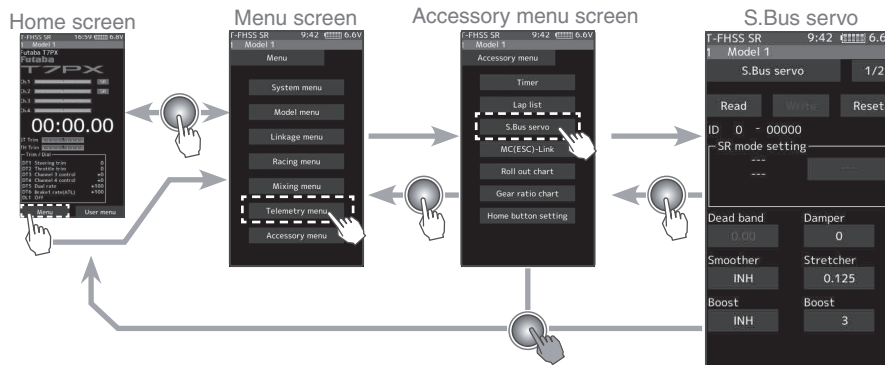
When using "S.BUS / S.BUS2" servo with steering mixing (Instruction manual page 103) with a twin servo specification car such as 1/5 GP car, in the channel setting function (Instruction manual page 75), 1st channel and 2nd channel are set to steering, both servos can be wirelessly set.





## How to use wireless settings

The transmitter's power switch turns on the PWR side and outputs radio waves. Wireless setting are not be used on the DISP side. Turn on the battery switch of the receiver and confirm that the servos can operate. The S.BUS servo screen is displayed in the following way.



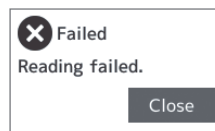
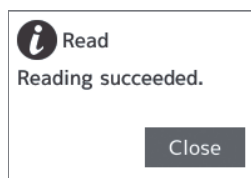
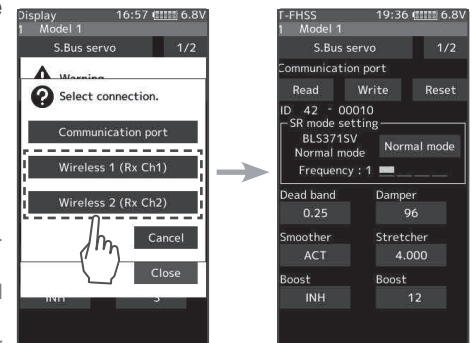
- 1 Tap the [Read] button. The notes on wireless setting are displayed. Tap the [Close] button. Once this screen is displayed, it will not be displayed again until you turn the power back on.



- 2 Touch the channel in which the servo to be set is connected and read the setting data from the servo.

- Communication port :T7PX communication port (conventional wired setting).
- Wireless 1 (Rx Ch1) :Receiver channel 1
- Wireless 2 (Rx Ch2) :Receiver channel 2

- "Reading succeeded" is displayed on the screen and the servo's ID cord and currently set contents are read.  
 - If "Failed" is displayed on the screen, communication with the servo is not being performed normally.  
 Check the T7PX and servo connection to servo and repeat [Read]. (Check receiver power supply etc.)



## Other changes and additions

- Operation change in the "Acceleration" range (instruction manual page 60) within EPA setting range.
- Added poll number setting and gear ratio setting on Telemetry Link setting screen of non-Futaba sensor (Castle TL 0).
- Added support to change SR mode of BLS373SV.

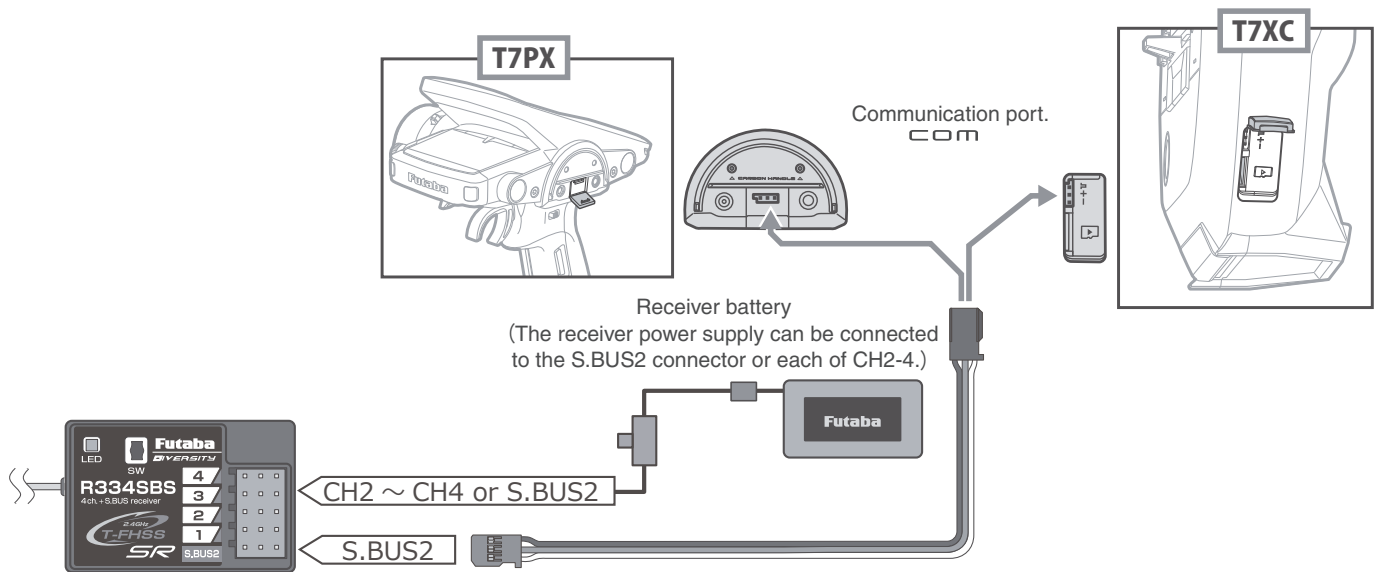
Futaba has a function to program your Futaba R334SBS / R334SBS-E receiver from the T7PX / T7XC.

To update the receiver, you need a PC that can be connected to the Internet, a mini driver (to push the switch of the receiver), a micro SD card (commercial product), and a cord for CGY750 / GY701 / GY520 (optional) or DSC cord (optional).

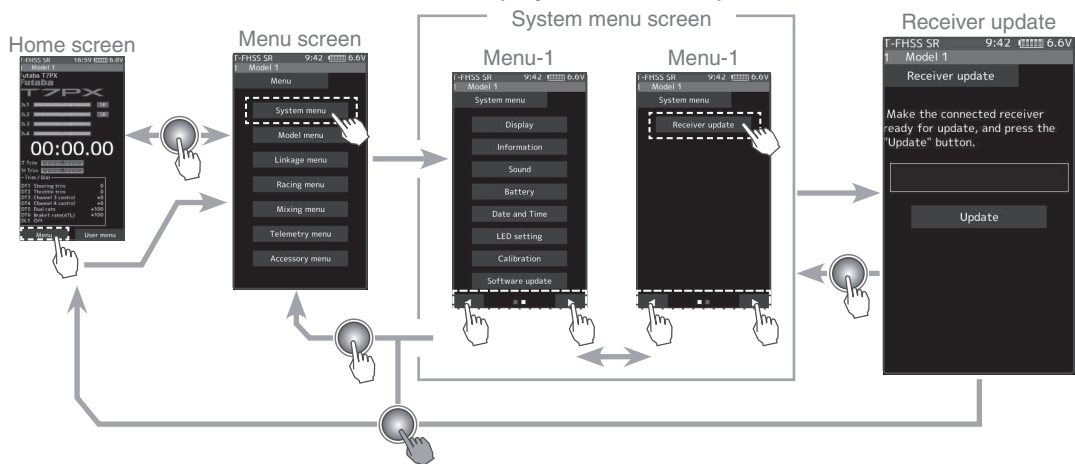
## Preparing for update

- Download the zip file of the update data from our website or your local distributor's website.
- Extract the zip file on your computer. A folder named "FUTABA" is created.
- Insert the micro SD card that contains the "FUTABA" folder into the T7PX / T7XC.

## Connection between T7PX / T7XC and receiver

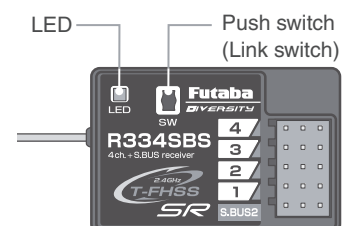


Turn on the DSP or PWR switch of T7PX / T7XC and display the receiver update screen.



## Update method

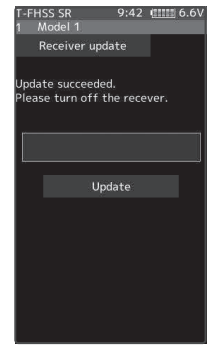
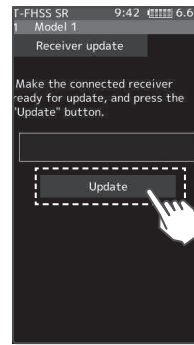
- 1 Hold down the Link switch first, and turn ON the receiver.  
After the LED flashes red once, release the Link switch and then press it again.  
As you continue holding down the Link switch, the LED starts flashing red and green. (Once flashing Red and Green, the initial process is complete.)  
- If red and green do not turn on at the same time, please start over from the beginning.



- 2 Tap the "Update" button on the screen. The update will start. A progress bar will be displayed indicating the progress. The LED of the receiver turns green, and it blinks green for a moment every time it accepts data from the T7PX.

- Do not turn off the power of T7PX while updating.

- 3 When the update is completed, a message is displayed on the screen, and the LED of the receiver stays flashing green. Please turn off the power of the receiver. Please check the operation before running (cruising).



- 4 When finished, return to the System menu screen by pressing the HOME button.

### Error

If an error display appeared, reinstall the update from the beginning.

- The receiver is not in the update wait state.
- The cable is disconnected.
- The power has been turned off
- The micro SD card is not inserted in the T7PX.
- There is no data on micro SD card.

## Forced initialization

V1.2

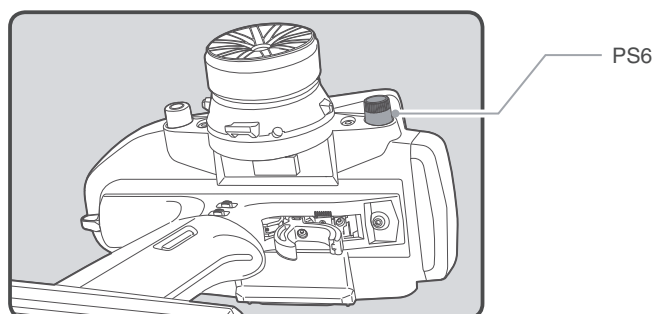
In the unlikely event that the model data is damaged and the T7PX stops working properly, it is possible to initialize the current model data in the following way.

### Note:

This operation completely initializes the model data. Please do not use it except when data is broken.

### How to Initialize

- 1 While pressing the PS6 switch, turn on the transmitter power.



- 2 A confirmation screen, "Caution!! The current model data will be initialized. Sure?", will be displayed.

- 3 Touch [Yes] to carry out initialization and turn off the power. Since the current model data will be initialized, please re-set the data and check the operation carefully before use. To cancel the operation, touch [No]. The power is turned off without initializing the data.

- After initialization, the current model data will be initialized, so please set the data again before using and confirm the operation.

