

Futaba ESC MC-980H/A UPDATE CHANGES

Ver.04.0.05

It improved throttle response in fixed-wing mode. Please update the latest version according to this manual's 10: Update screen and method.



Setting data of MC-980H/A will be reset when updating. Please fix it again after updating.

■ PC system requirements

- Windows 8.1, Windows 10, Windows 11
- The required RAM and supported CPU conform to the OS requirements.

■ How to use Futaba ESC USB Link (Update requires Futaba ESC USB Link.)

1. Install

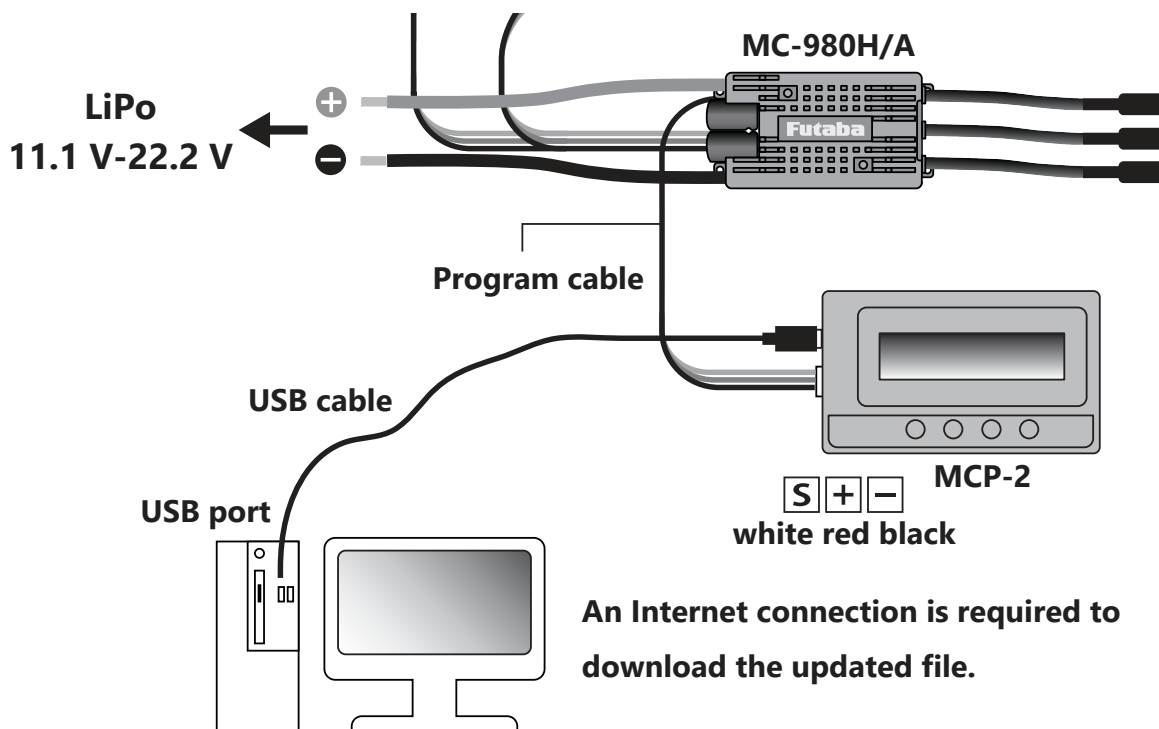
Extract and use the compressed download zip file.

2. Uninstall

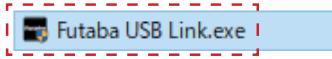
Please delete the file.

■ Connections

- The update requires the Futaba ESC Program Box MCP-2 (sold separately).



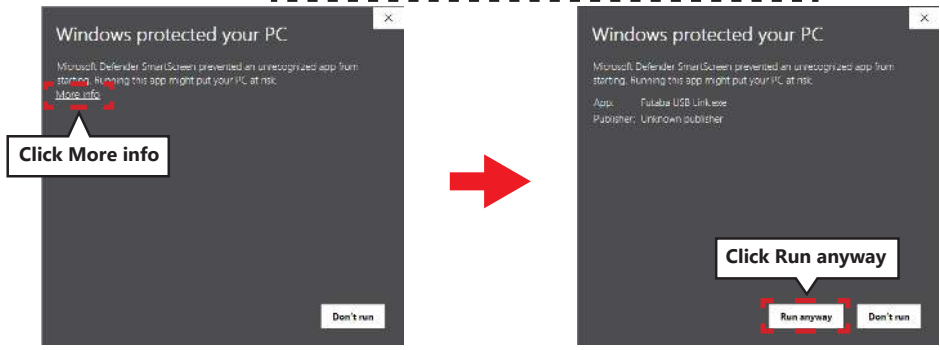
1. An Internet connection is required to download the updated file.
2. The display differs depending on the environment.
3. Start Futaba USB Link.exe from the expanded folder.



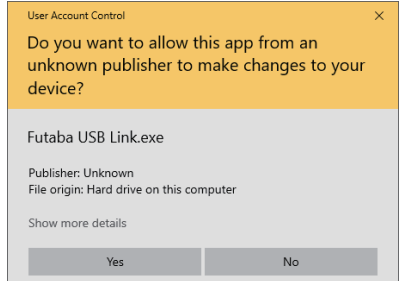
Note: "Futaba USB Link.exe" will not start if you move it to another location from the folder where only Futaba USB Link.exe is expanded.USB Link.exe is expanded.

4. Remove protection.

It may not be displayed depending on the environment.



5. Click Yes.



The display differs depending on the environment.

6. Futaba USB Link.exe will start.

File(F)
 English: English display
 Japanese: Japanese display

Confirm the display of the latest version
 Database: 2022-11-26 (MM-DD-YY)

You can check the connection status of the ESC/program box, etc.

Device(D)
 ESC Speed Controller
 LCD Program Box
 Select ESC or Program Box

Demo Mode
 MC980H-A
 MC9200H-A
 MC9130H-A
 SBM-2
 Demo display of setting items
 You can check the setting items without connecting ESC.

Display the connection status of ESC/program box.

Save the data set by Futaba USB Link to ESC. Click Default to return to the initial value.

7. General Setting screen

You can configure general settings for ESC.

Click each item to change the setting.

A description of the function is displayed here.

If you change the settings, click "Apply" to save it to the connected ESC, and it won't take effect until you save it.

8. Throttle Control screen

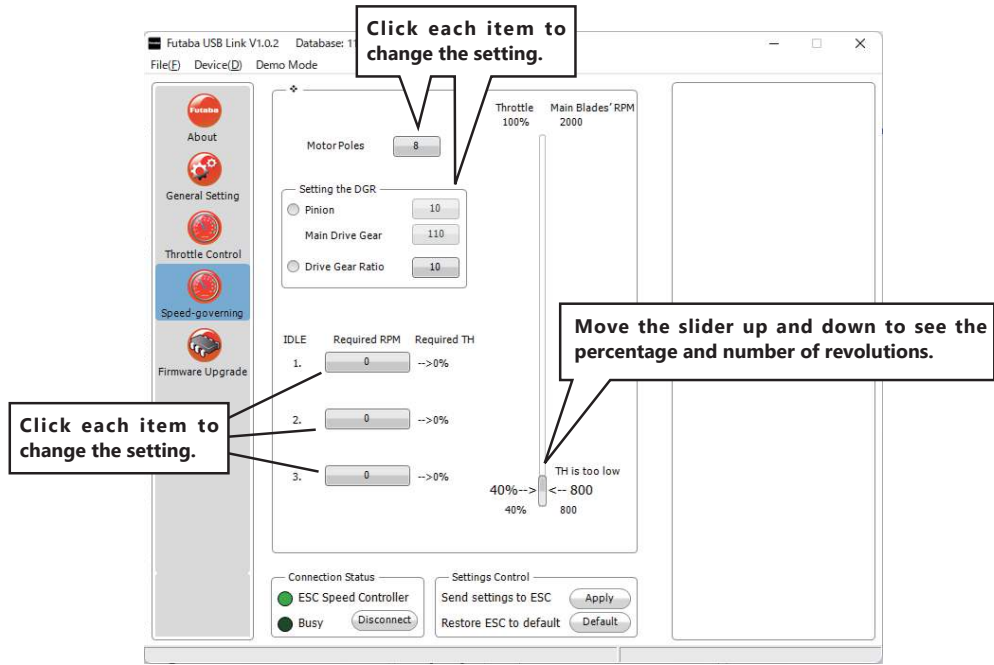
You can make detailed settings for ESC.

Click each item to change the setting.

A description of the function is displayed here.

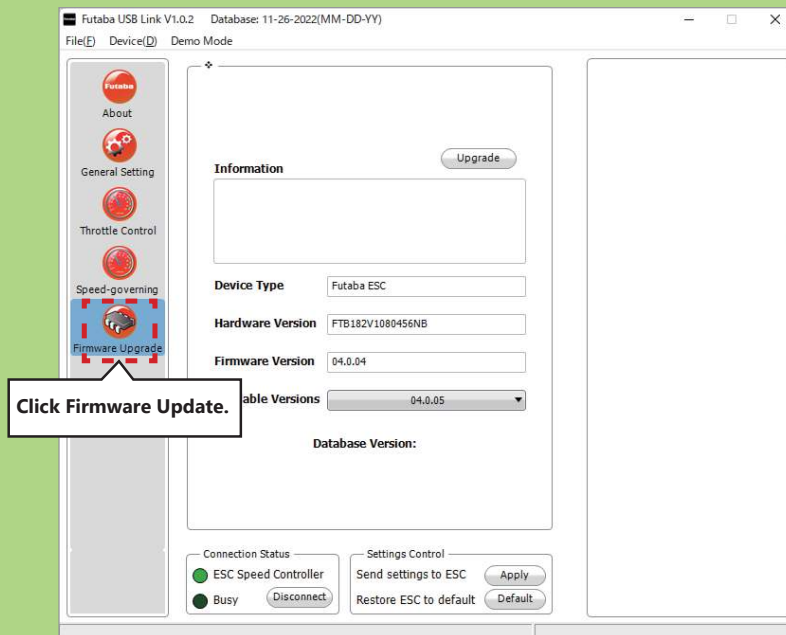
If you change the settings, click "Apply" to save it to the connected ESC, and it won't take effect until you save it.

9. Speed governing screen



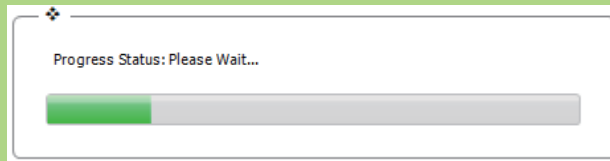
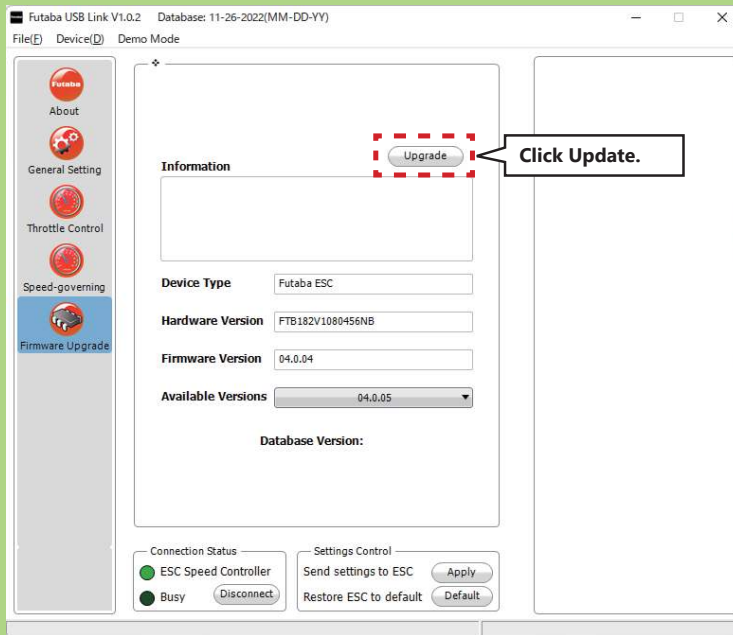
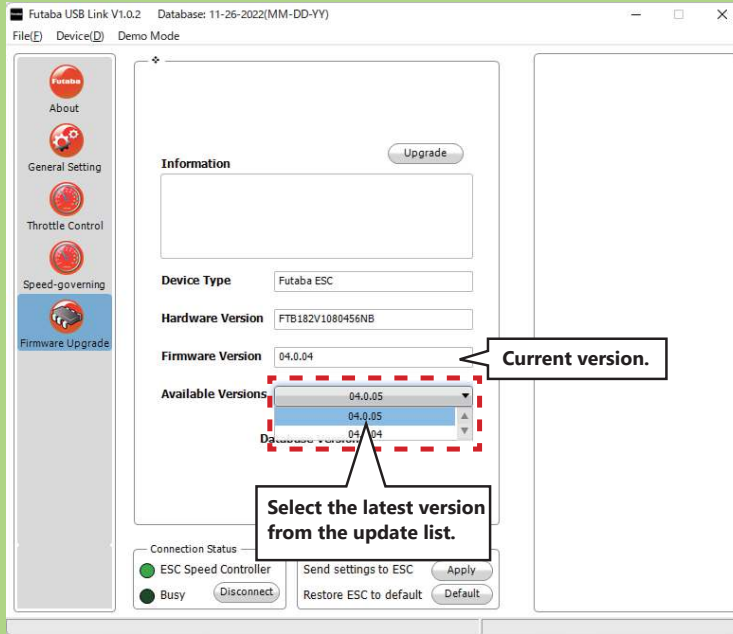
This is the setting when using the Speed governor function.

10. Update screen and method

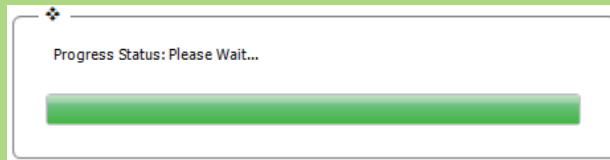


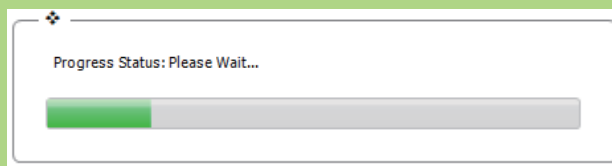
If an update for the applicable ESC and program box MCP-2 is released, you can update it here.

Select update version.

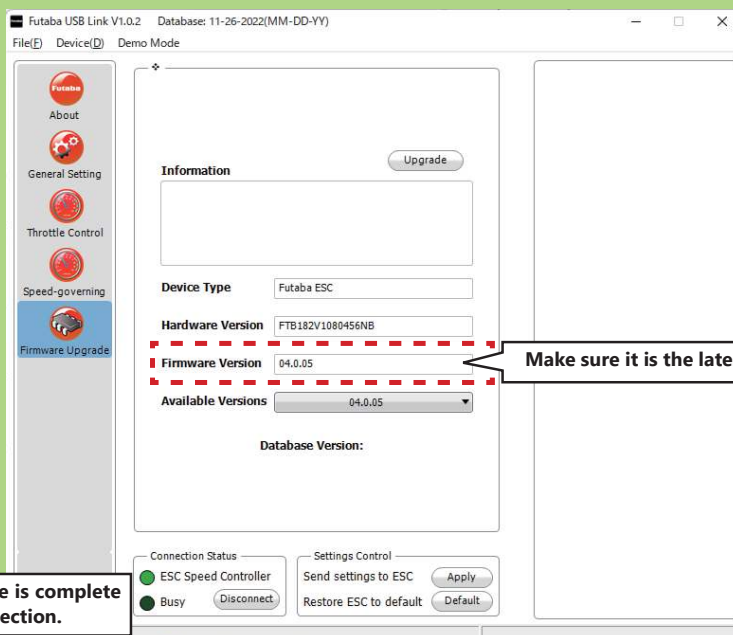
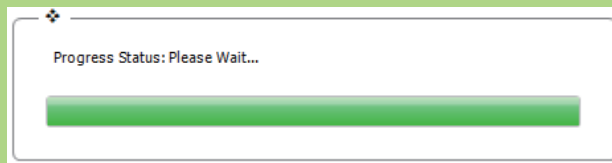


Stay connected and wait for a while.





Stay connected and wait for a while.



Now that the update is complete disconnect the connection.

Changes in Ver.04.0.05

Optimized throttle response when used in fixed-wing mode.

■ It improved throttle response in fixed-wing mode.

Set the startup time in the range of "0" to "2" on the general setting screen.
The smaller the value, the better the response.

