

Futaba Model Data Converter

Model Data Converter

The Futaba Model Data Converter is designed to allow modelers to quickly and efficiently share data between various Futaba transmitters that utilize either an SD or CF memory card. For example, it is now possible to copy the model data from a T14MZ transmitter and utilize this data on Futaba's T12FG system without having to manually reprogram the 12FG to do so.

Prior to using the Model Data Converter software, please ensure that your transmitter is utilizing the latest update for the respective transmitter. Also, be sure to select the desired conversion data in transmitter after it has been updated.

The Futaba Model Data Converter supports the model data of a transmitter that has been updated to the following versions.

Tx type	Editor Version	Encoder Version
T14MZ/FX40	Ver.1.3.2 and later	Ver.1.41 and later
T12Z	Ver.1.3.2 and later	Ver.1.39 and later
T12FG/FX30	Ver.1.6 and later	

Important: Always check the operation of the model prior to flight.

1. Preparation

1-1. Please make sure that the card reader is attached to the PC prior to inserting the memory card.

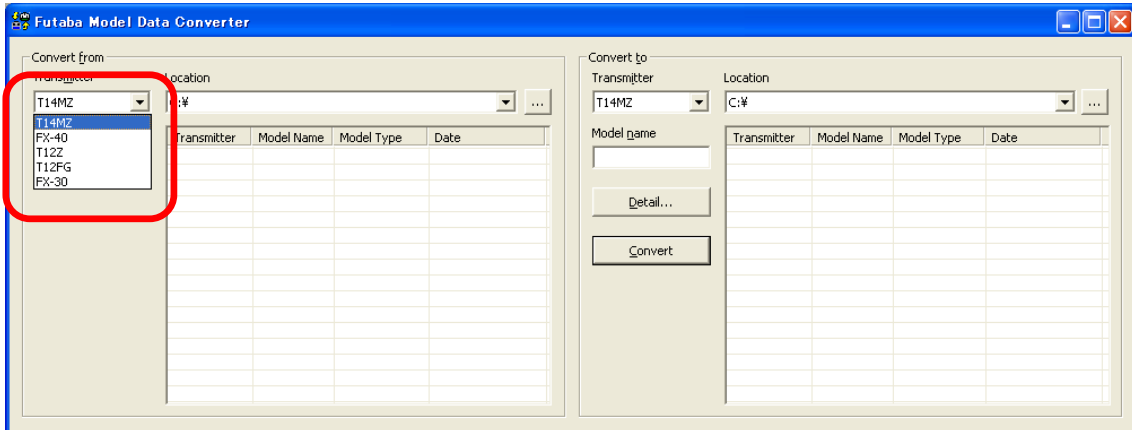
1-2. After ensuring that the memory card of the original transmitter contains the model to be converted, place the memory card in the card reader which is attached to your PC.

(Note) When the source code of the conversion and the transmitter model support the same memory card type (i.e., SD or CF), you may utilize the same memory card to save the data.

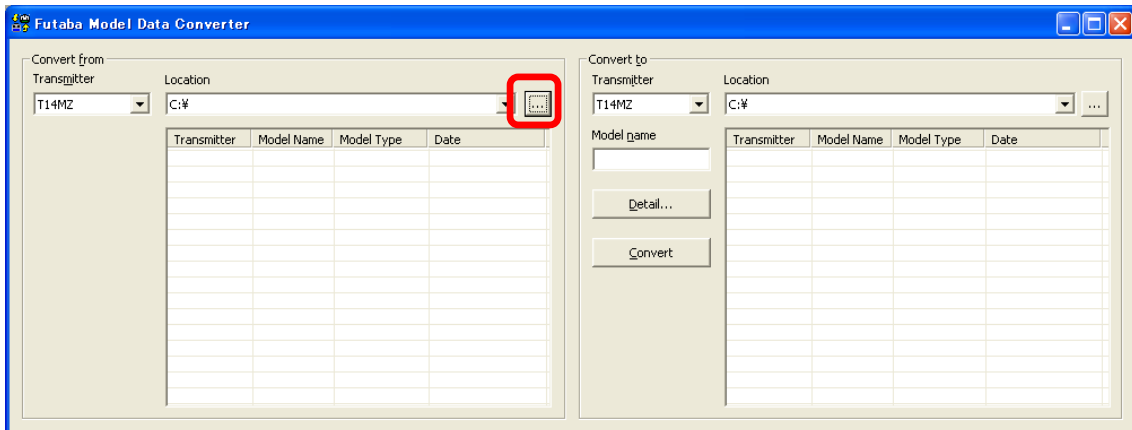
1-3. Please run the Model Data Converter. To do so, click the Model Data Converter executable.

2. Select the Source of the Data

2-1. Please select the transmitter type from which the data will be transferred. To do so, click on the 'Transmitter' drop-down menu located in the 'Convert from' block.



2-2. Next, click the "..." button of the "Convert from" block.



2-3. The “Browse for Folder” dialog, as shown below, will appear. Please select the directory and/or folder in which the model data is saved and click the “OK” button.

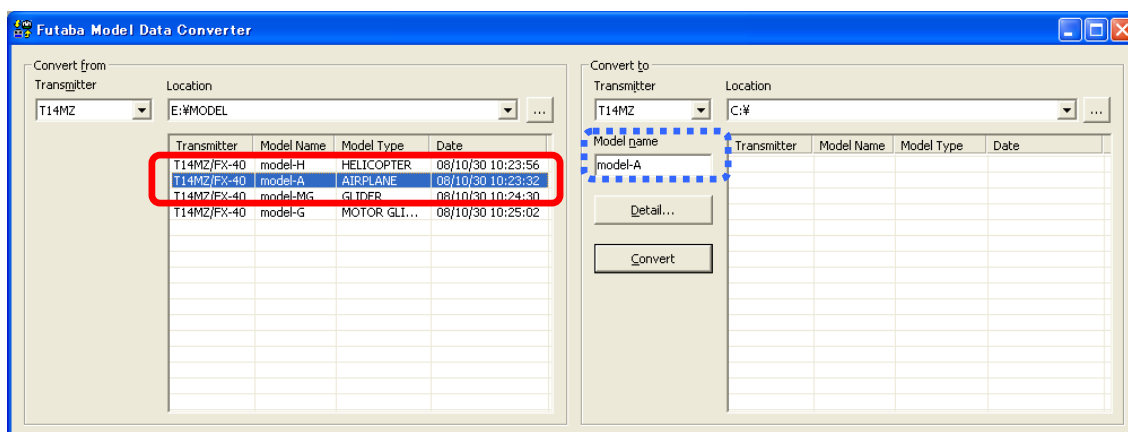


Please Note:

T14MZ/FX40/T12Z ... it is necessary to select the “MODEL” folder of the CF card drive.

T12FG/FX30 ... simply select the SD card drive.

2-4. The list of the saved model data from this card will be displayed in the Transmitter, Model Name, Model Type and Date columns in the “Convert from” block. Select the desired conversion data from this list.

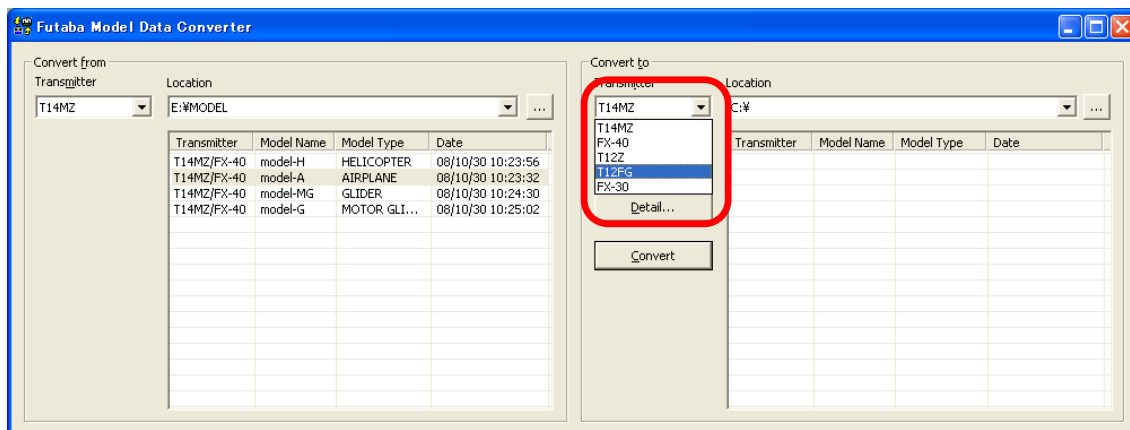


(Note) If the “Model name” text box in the “Convert to” block is blank, the selected model data name is input into this “Model name” text box automatically.

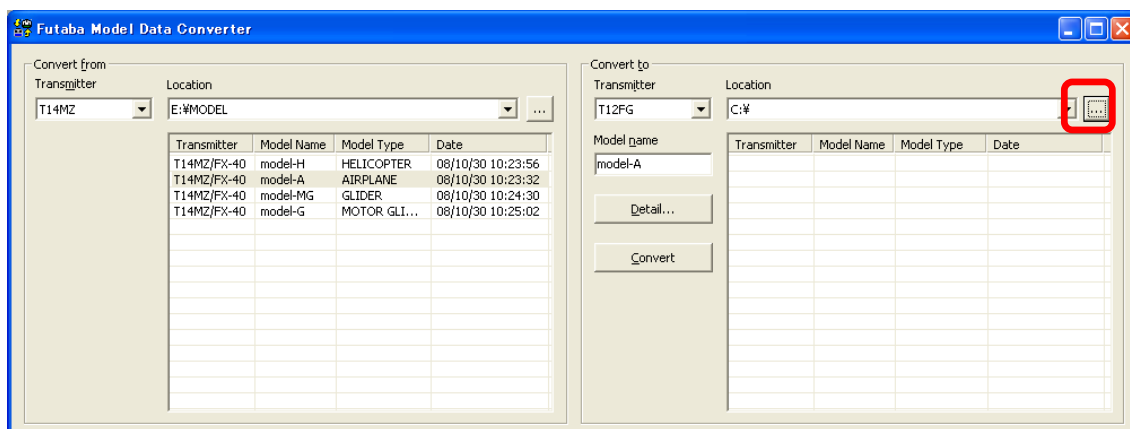
(Note) If a name is already input into the text box, it will be changed to reflect the model data name which has been selected in the “Convert from” block.

3. Select the Intended Location for the Converted Data

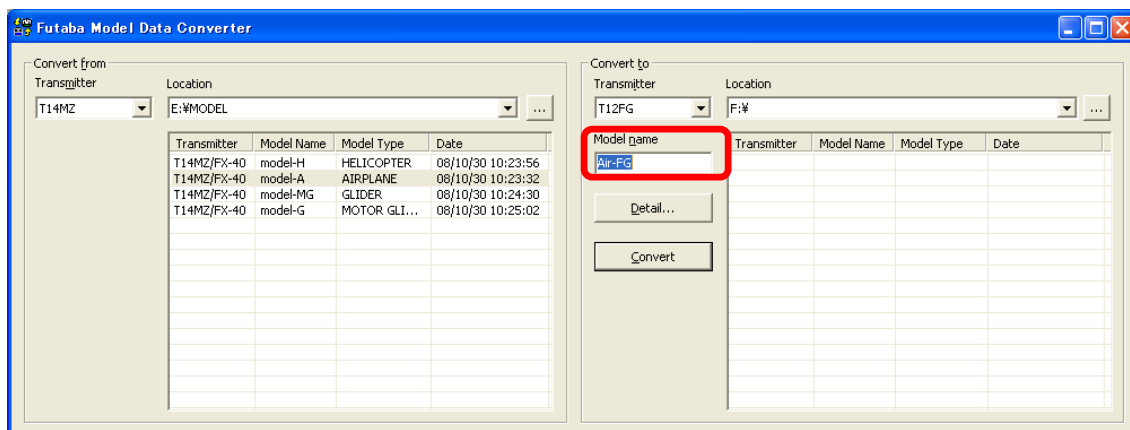
3-1. Using the drop-down menu selection located in the “Convert to” block, select the transmitter to which the data will be transferred.



3-2. Click the “...” button of the “Convert to” block and select the respective folder or directory designation. Once you are satisfied with the selection, click the “OK” button.



3-3. Click on the “Model name” dialog box. Using the PC’s keyboard, enter a new name for the model. Please note: this will be the name displayed in the “Model name” columns of the “Convert to” block when the data is converted.

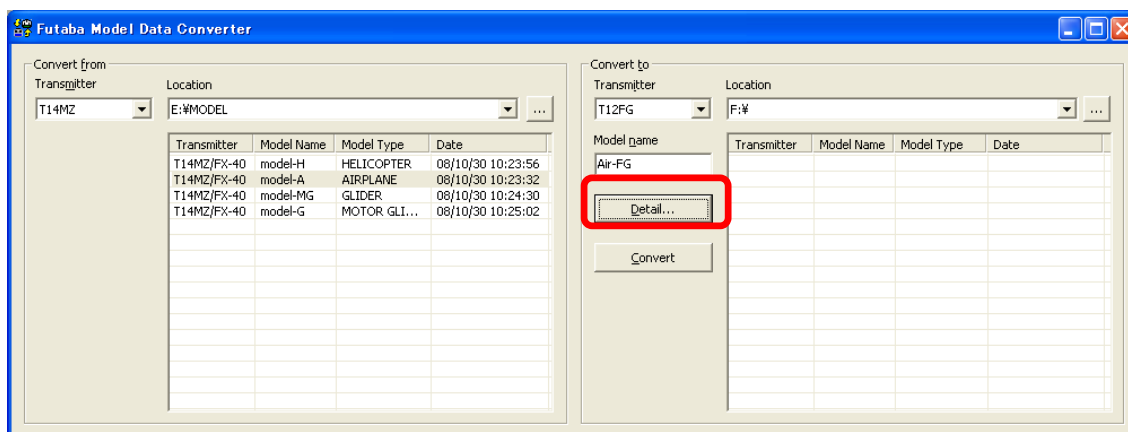


4. Detailed setting

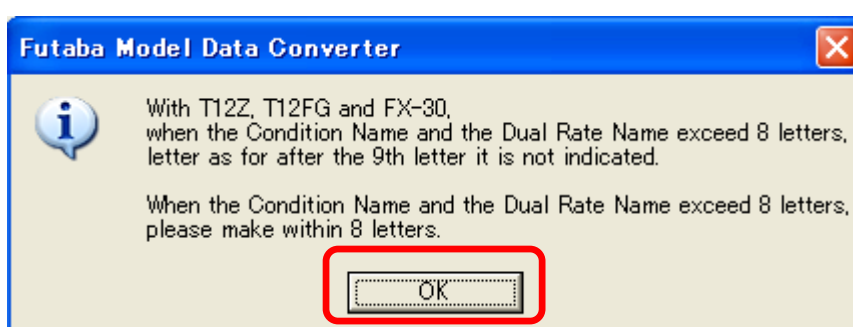
It is possible to change the “condition name”, “dual rate name”, and “hardware assignment” during the data conversion.

If you do not desire to make these changes, it is not necessary to follow the steps in this section.

4-1. Please click the “Detail” button in the “Convert to” block.



4-2. If the transmitter is a T12Z/T12FG/FX30, click the “OK” button after you have read the information in the dialog box which appears.



4-3. Clicking the “OK” button in 4-2, will bring forth the dialog box below. The “Detail” dialogue is displayed. If you are satisfied with the detailed settings, please click the “OK” button. To make refinements to this information, please refer to the information below contained in the Condition Name, Dual rate Name and Substitute Hardware function sections.

[Condition Name]

- * Please input the new condition name into the text box of the respective editing condition.
- * If you click the “Reset” button of the “Condition name” block, and select “Yes” in the confirmation dialog, the condition names are initialized using the name of the conditions from the original data.
- * If you click the “Set to default ” button of the “Condition name” block, and select “Yes” in the confirmation dialog, the condition names are initialized in an abbreviated form with only eight (8) characters. For example, “CONDIT1” rather than “Condition 1”.

[Dual rate name]

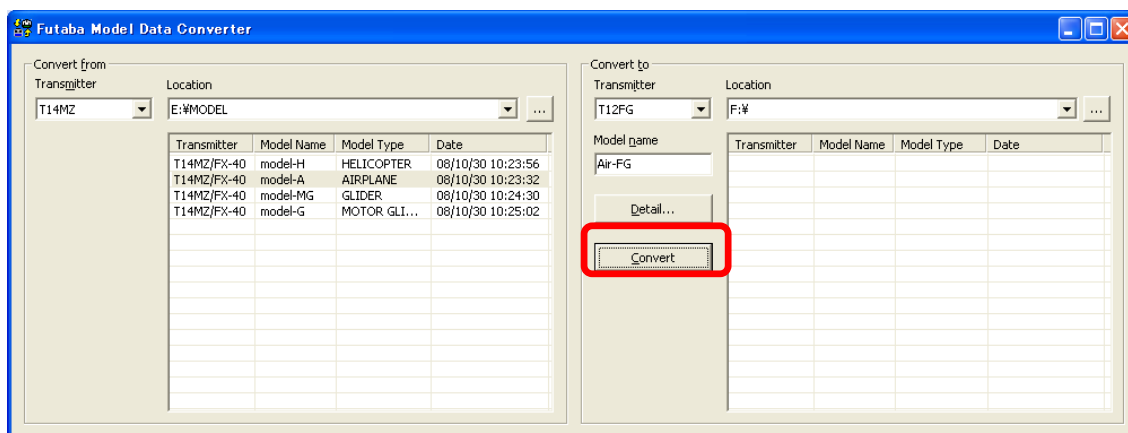
- * Every condition allows the editing of the dual rate names. To select the condition to edit, use the drop-down menu in the “Condition” list of the “Dual rate name” block.
- * When you select the “Reset” button of the “Dual rate name” block, the dual rate names are reset utilizing the name designations from the original data.
- * When you select either the T12FG or FX30 as the intended destination location, you cannot edit the dual rate names.

[Substitute hardware function]

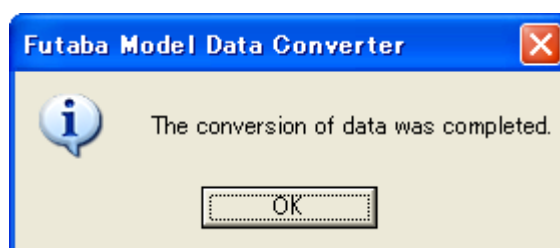
- * The Futaba Model Data Converter can substitute hardware if the intended transmitter is not equipped with the same items. For example, if the source code transmitter utilized an “RST ” designation, the converted data may be replaced by “ RS ” if the destination transmitter does not utilize the “ RST ” designation but uses “RS” instead.
- * If the intended transmitter does not utilize the same hardware, the initial value of the hardware is set to NULL.
- * The substitution of switch hardware and the linear hardware is not possible.
 - Switch hardware …SW-A,SW-B,SW-C,SW-D,SW-E,SW-F,SW-G,SW-H,SS1(SI),SS2(SJ),CD-SW
 - Linear hardware …LD,RD,LS,RS,LST,RST,CD,L1,L2,L3,J1,J2,J3,J4,T1,T1,T3,T4.T5,T6,T7,T8

5. Data conversion

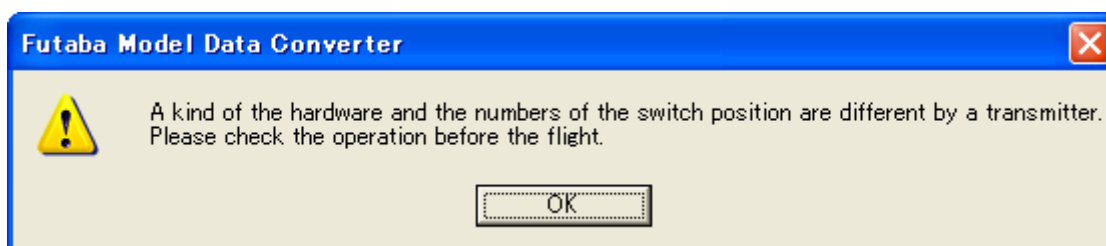
5-1. Click the "Convert" button.



5-2. If successful a dialog box, as shown below, will appear. Please click the "OK" button.



5-3. Depending upon the source and destination transmitter models, a warning dialog *might* appear. Read the information in the dialog box prior to clicking the "OK" button. Additionally, we suggest that you check the operation of the model prior to flight.



6. Precautions and warnings

6-1. General

- T14MZ and FX40 are displayed with "T14MZ/FX40" in the "Transmitter" column on the "Convert from" and "Convert to" blocks.

6-2. When converting data to the T12FG or FX30 from the T14MZ, FX40, or T12Z

- The Box/Hysterisys setting of the hardware is canceled.
- The nested logic switch is set to NULL.
- All logic switches except the "Condition Select" are set to NULL.
- The Linear/VTR/Spline curve is changed to a point curve.
- The combination setting is set to Single unless it is set in all Condition to Group.
- The setting of "Fuel Mixture" and "Multi Engine" are initialized.

6-3. When converting data to the T14MZ, FX40, or T12Z from either the T12FG or FX30

- When the model type selected is a glider, and the motor function is used, the model type is converted to a motor glider.

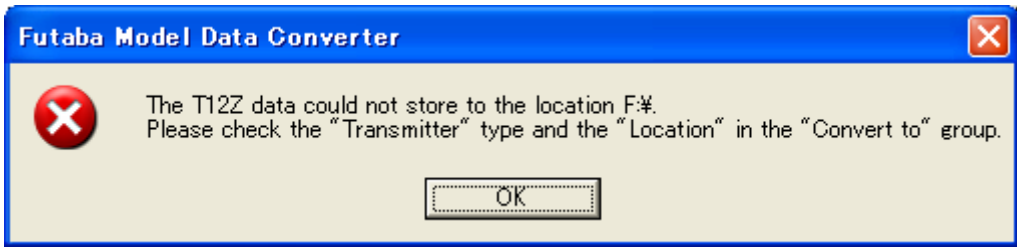
6-4. When converting data to the FX30 from the FX40

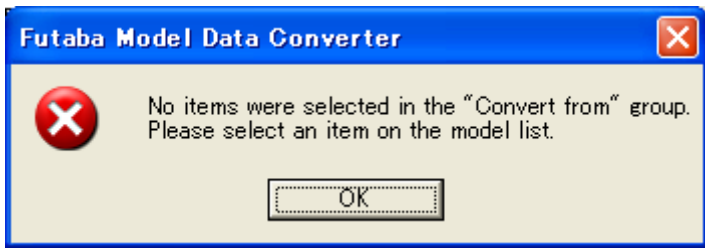
- SS1/SS2 are converted to SI/SJ.

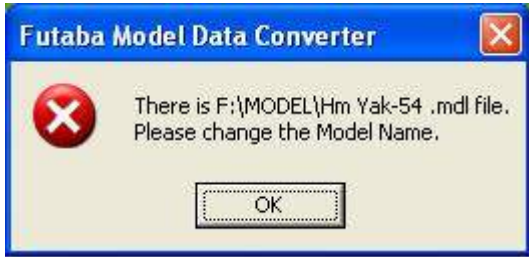
6-5. When converting data to the FX40 from the FX30

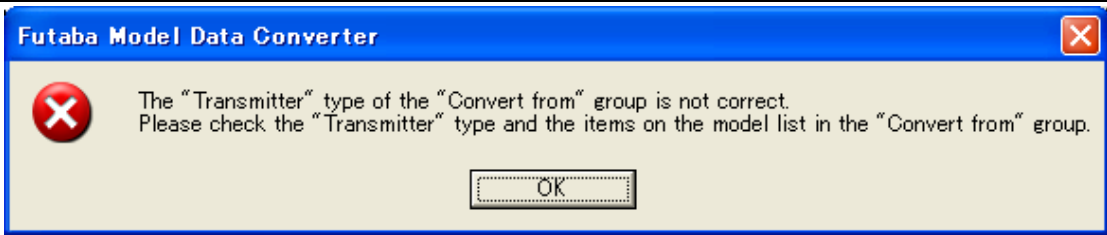
- SI/SJ are converted to SS1/SS2.

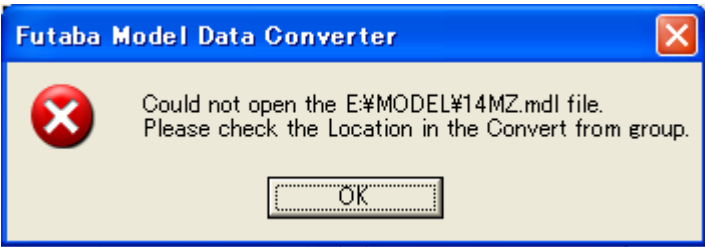
7. Error Message


	
Subject	Bad, or incorrect, media type
Message	The "Transmitter" type data could not store to the location "Drive or folder path". Please check the "Transmitter" type and the "Location" in the "Convert to" group.
Explanation	The SD card can only save model data of the T12FG/FX30 using a special format (FFS format). However, the Model data of the T14MZ/FX40/T12Z was going to be created to an SD card formatted with the FFS. Alternatively, this might indicate that the model data of a T12FG/FX30 was going to be created to a location that did not contain an SD card formatted with the FFS.
What to do	Please set "Transmitter" and "Location" of the "Convert to" block again. If the "Transmitter" is a T12FG/FX30, please set "Location" to the SD card which utilizes the FFS format. If the "Transmitter" is a T14MZ/FX40/T12Z, please set "Location" to any place other than the FFS formatted SD card.

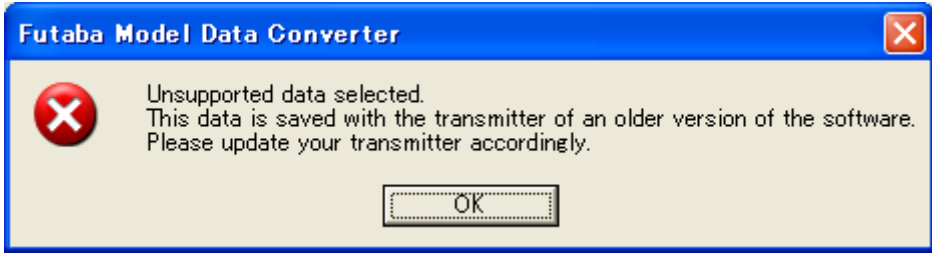
	
Subject	The user has not selected the source location for the data
Message	No items were selected in the "Convert from" group. Please select an item on the model list.
Explanation	The model name of conversion data is the same as an existing model name.
What to do	Model data cannot be displayed on a list of "Convert from" block. Please set "Location" of the "Convert from" block to the location where the source conversion data is saved. If the location is correct, the items are displayed on the respective list and it will be possible to select amongst these items.

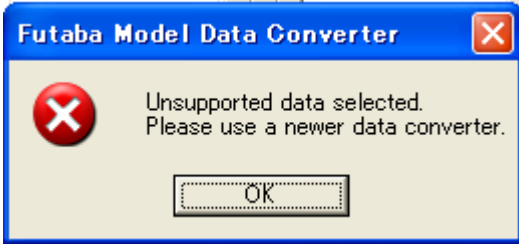
	
Subject	Repetition of the model name
Message	There is "file path" file. Please change the Model Name.
Explanation	There is already the model data of the same name. As such, you must rename the data accordingly. You cannot create the model data of the same name in T14MZ/FX40/T12Z.
What to do	Please input a unique name into the "Model name" text box of the "Convert to" block. You can confirm the name of other model data from the list of the "Convert to" block.

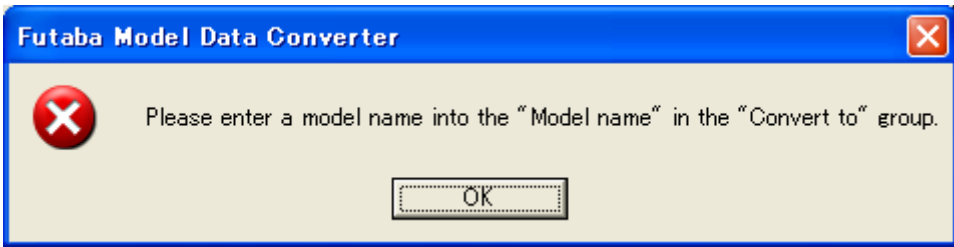
	
Subject	Inaccurate transmitter selection for the source code data
Message	The "Transmitter" type of the "Convert from" group is not correct. Please check the "Transmitter" type and the items on the model list in the "Convert from" group.
Explanation	The transmitter type information of the source code information is different from the transmitter type chosen in "Transmitter" of the "Convert from" block.
What to do	Please select the proper "Transmitter" in the "Convert from" block in the transmitter type drop-down menu. It is possible to confirm the transmitter type for the source code in the "Transmitter" column of the data list of the "Convert from" block.

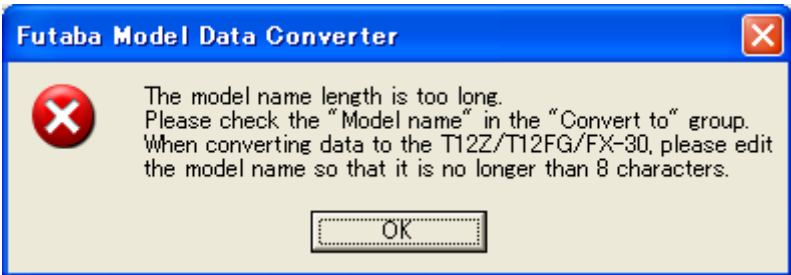
	
Subject	The Futaba Model Data converter cannot open the selected file
Message	Could not open the "file path" file. Please check the Location in the "Convert from" group.
Explanation	After the setting of origin of conversion data, it appears that a file was erased, or that the memory card was removed prematurely.
What to do	Please select the source code conversion data once again.

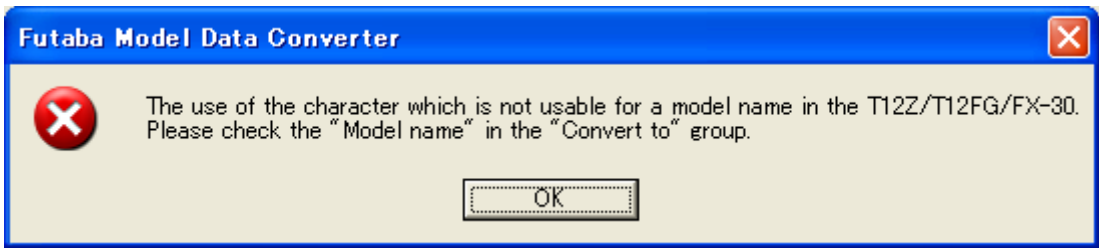
	
Subject	The Futaba Model Data converter cannot save the file
Message	Could not open the "file path" file. Please check the Model Name and the Location in the "Convert to" group.
Explanation	After the selecting the source code data, it appears that a folder set in the "Location" of the "Convert to" block was erased, or that a memory card was removed prematurely.
What to do	Please choose the location of conversion data once again

	
Subject	The model data is older and not supported by the transmitter
Message	<p>Unsupported data selected.</p> <p>This data is saved with the transmitter of an older version of the software.</p> <p>Please update your transmitter accordingly.</p>
Explanation	The structure of model data is different in the version saved in the transmitter's memory. As such, the model data converter cannot convert the old data as it is unsupported.
What to do	Please "Select" the origin of conversion data in the "Model Select" screen of the transmitter after it has been updated to the latest software version. Next, try converting the data once again.

	
Subject	The data converter is old
Message	<p>Unsupported data selected.</p> <p>Please use a newer data converter.</p>
Explanation	The structure of model data is different than the version of a saved transmitter. The model data converter cannot support the data of the future transmitter software.
What to do	Please download the latest version of the model data converter. Next, try converting the data once again.

	
Subject	No model name
Message	Please enter a model name into the "Model name" in the "Convert to" group.
Explanation	The "Model name" text box in the "Convert to" block is blank.
What to do	Please enter a model name into the "Model name" in the "Convert to" group.

	
Subject	The model name is too long
Message	The model name is too long. Please check the "Model name" in the "Convert to" group. When converting data to the T12Z/T12FG/FX-30, please edit the model name so that it is no longer than 8 characters.
Explanation	The number of model name characters exceeds the allowable limit. When using the T12Z/T12FG/FX-30 transmitters, the model name is limited to a maximum of 8 characters.
What to do	Please enter a shorter name into the "Model name" in the "Convert to" group.

	
Subject	Unusable character
Message	The use of the character which is not usable for a model name in the T12Z/T12FG/FX-30. Please check the "Model name" in the "Convert to" group.
Explanation	The model name contains unusable characters. Some characters cannot be used for a model name in the T12Z/T12FG/FX-30. For example, "Japanese KANJI".
What to do	Please enter a new model name into the "Model name" in the "Convert to" group. (Note) The following characters are usable for the T12Z/T12FG/FX-30. 0 to 9, A to Z, a to z, and signs (" * / : < > ? ¥ are unusable).