

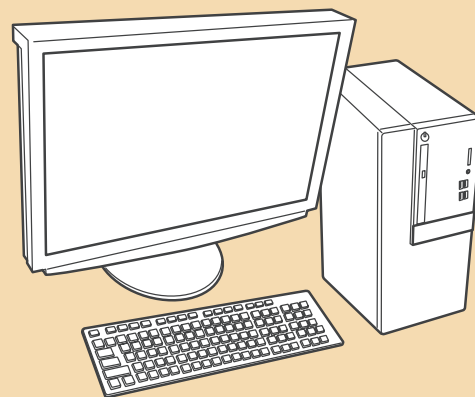
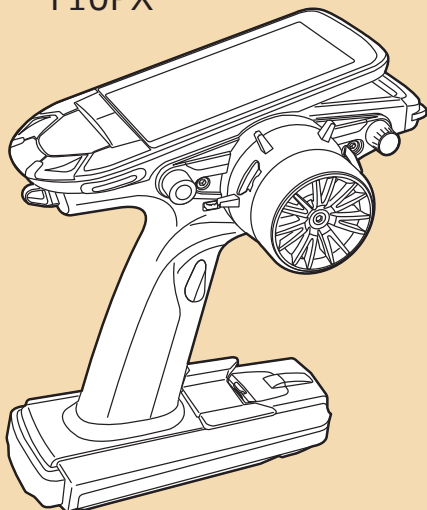
R404SBS/R404SBS-E Software update manual

Your Futaba R404SBS/R404SBS-E programming can be updated easily online. When functions are improved, the update file can be downloaded from our website.

For more information, check out web site for FAQ regarding updating this product.

Required for update (Purchase separately)

T10PX

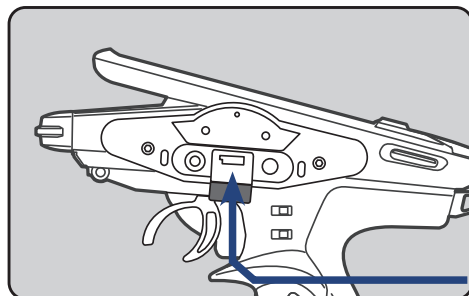


PC that can connect to the Internet



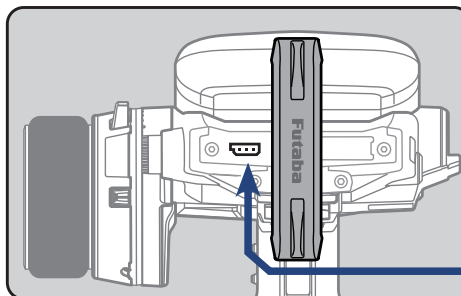
Connect as shown in figure

For T10PX

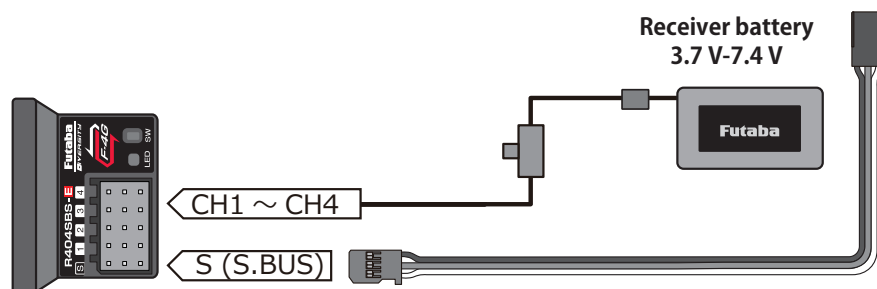


Communication Port

For T6PV

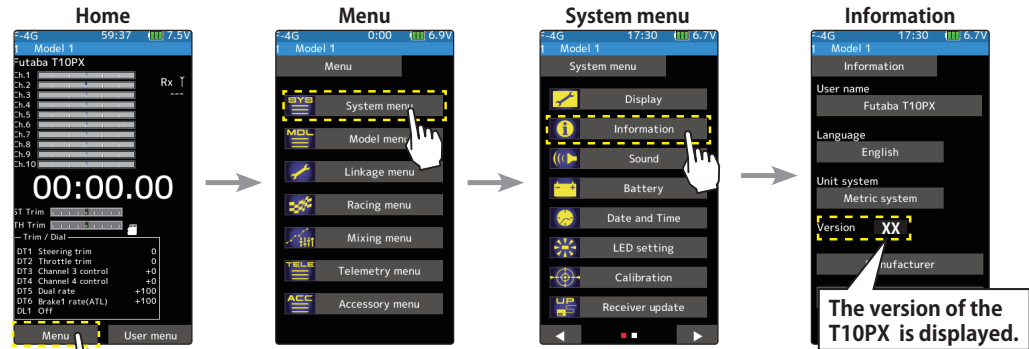


Communication Port

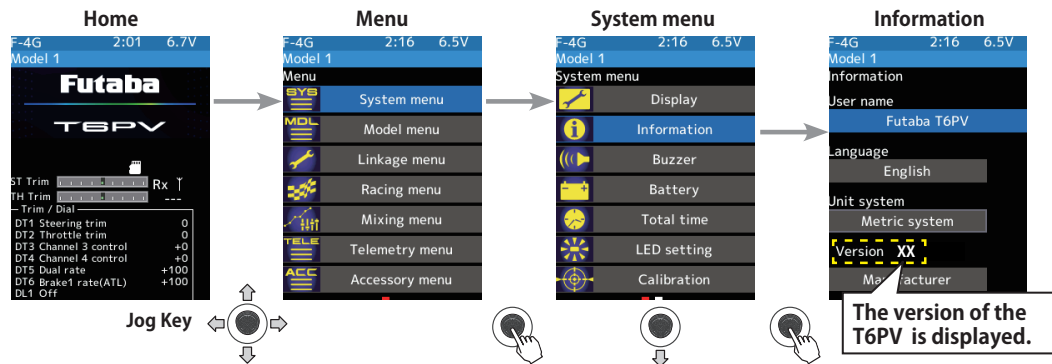


Transmitter Version check

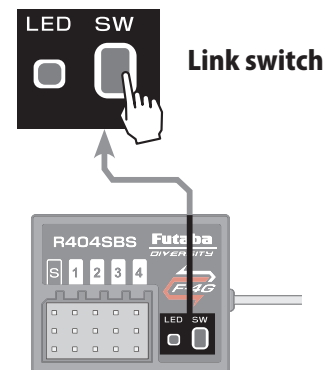
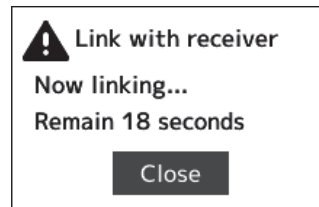
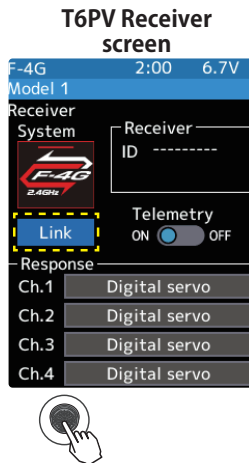
For T10PX



For T6PV

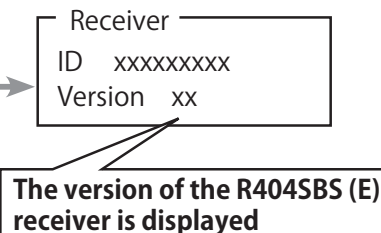
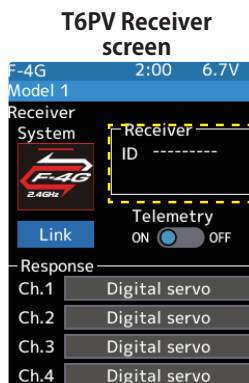


R404SBS(E) Version check



Transmitter in link mode.

Turn on the power of R404SBS (E) and press SW.



When using the UR servo, make sure that it is Ver2.0~.
Ver1.0 cannot be set wirelessly for UR servo, so upgrade to Ver2.0~.

Updating procedure

1. Download the zip file of the update data from our website or your local distributor's website.

<https://futabausa.com/>

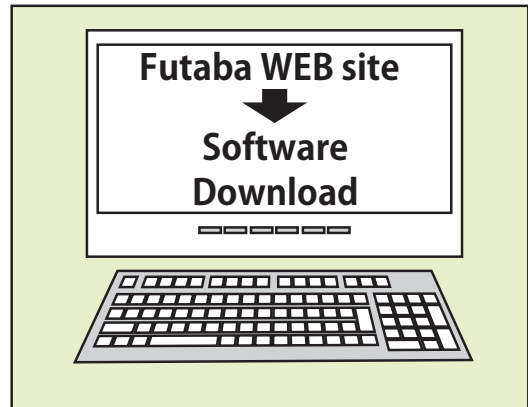
2. Extract the zip file on your computer.

3. Insert the micro SD card into the PC and copy the FUTABA folder expanded on the PC to the micro SD card.

If you already have a microSD card FUTABA folder, overwrite it.

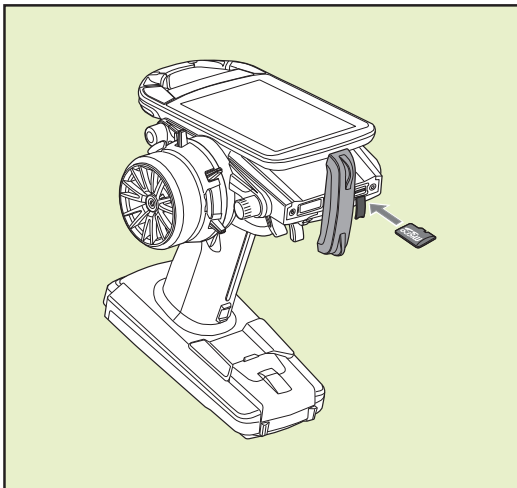


FUTABA

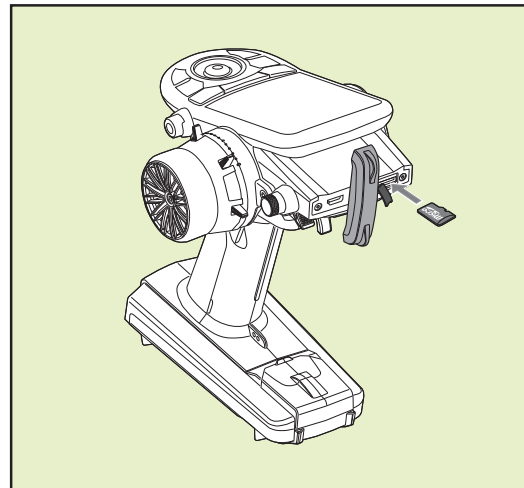


4. Insert the micro SD card with the copied FUTABA folder into the transmitter.

For T10PX

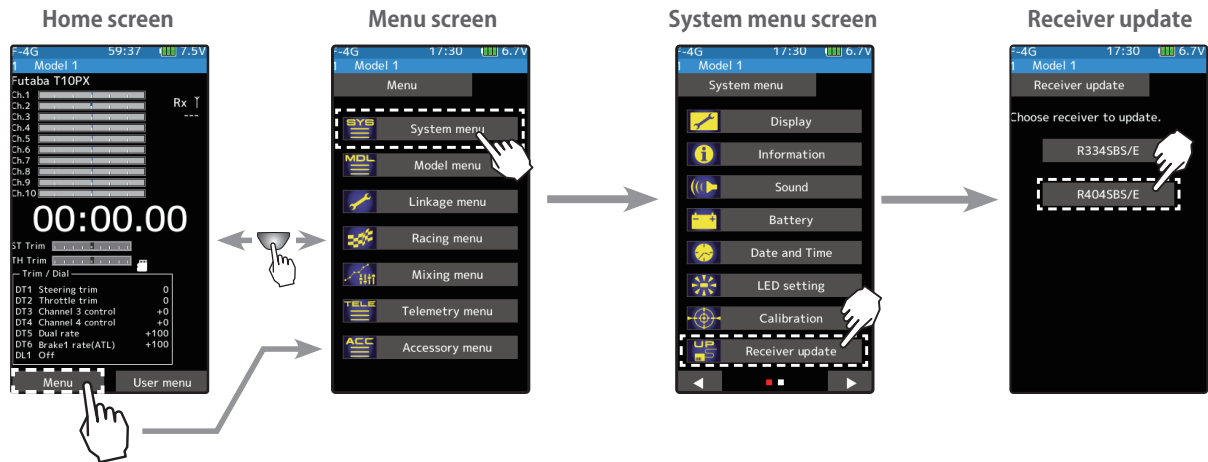


For T6PV

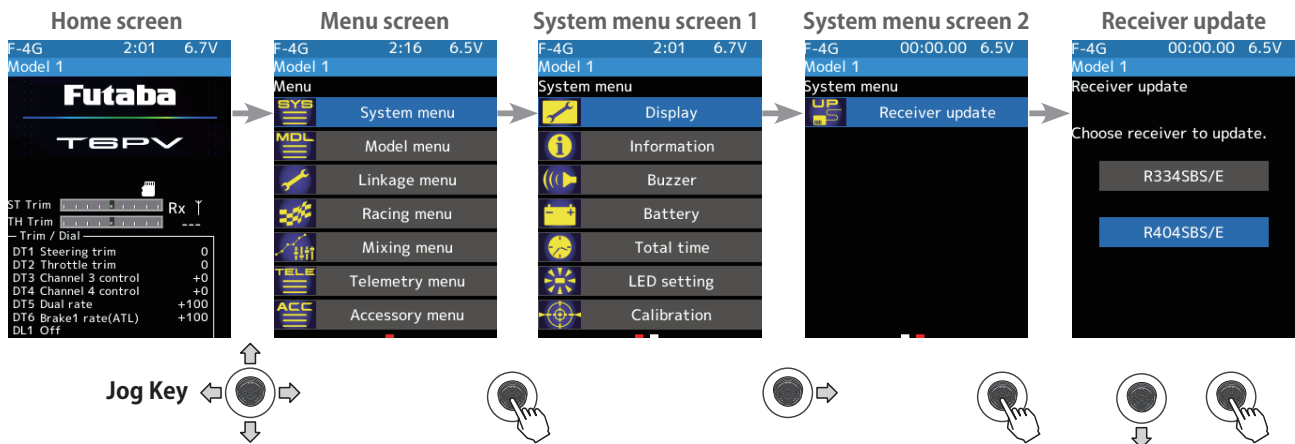


5. Turn on the DSP or PWR switch of transmitter and display the receiver update screen.

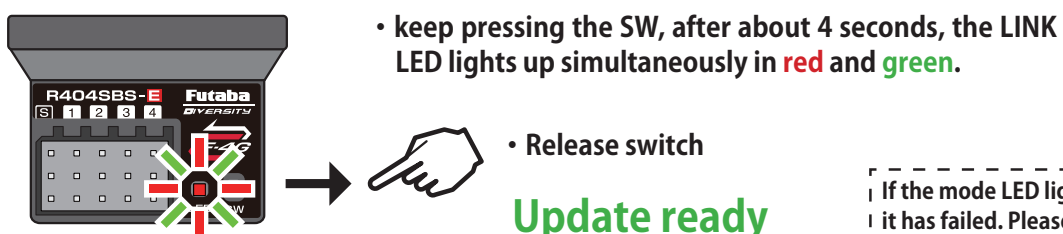
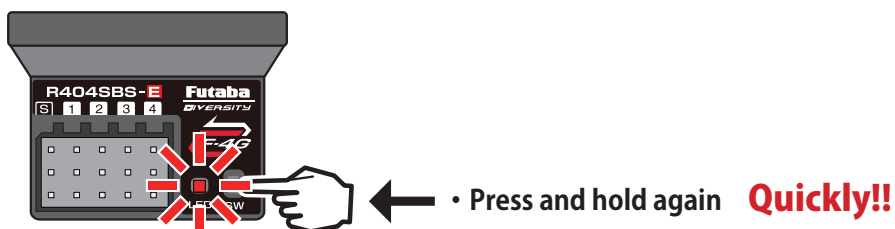
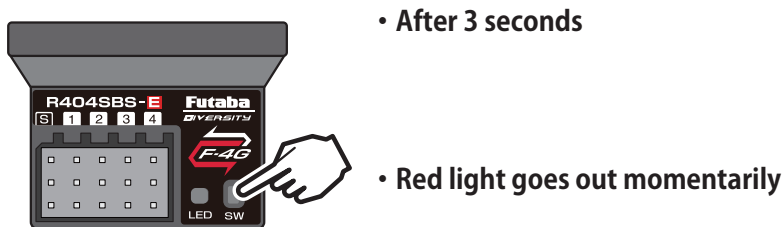
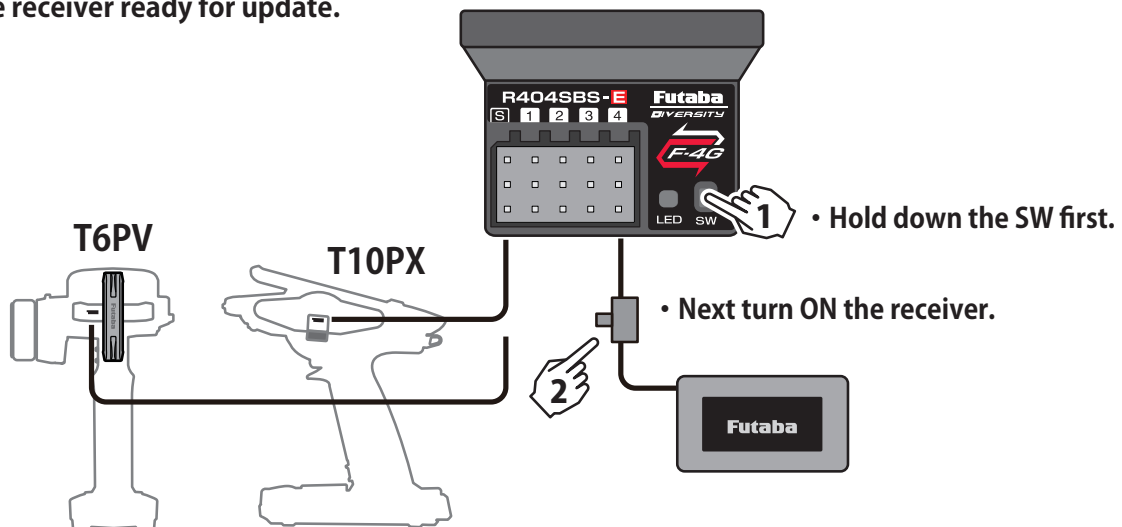
For T10PX



For T6PV



6. Put the receiver ready for update.

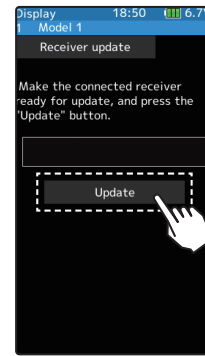


If the mode LED lights up green, it has failed. Please retry.

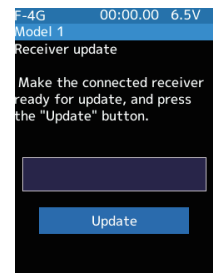
7. Press the "Update" button on the screen. The update will start. A progress bar will be displayed indicating the progress. The LED of the receiver turns green, and it blinks green for a moment every time it accepts data from the transmitter.

- Do not turn off the power of transmitter while updating.

For T10PX

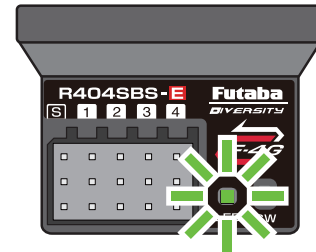


For T6PV



8. When the update is completed, a message is displayed on the screen, and the LED of the receiver stays flashing green. Please turn off the power of the receiver.

- Please check the operation before running.



9. When finished, return to the System menu screen by pressing the HOME button(T10PX) or END button(T6PV).

Error

If an error display appeared, reinstall the update from the beginning.

- The receiver is not in the update wait state.
- The cable is disconnected.
- The power has been turned off
- The micro SD card is not inserted in the transmitter.
- There is no data on micro SD card.

Compatible with Wireless GYD560 and GYC480 setting function

GYD560 and GYC480 parameters can now be set wirelessly (T10PX, T6PV).

* The T10PX requires an upgrade to version 14.0 or later, and the T6PV requires an upgrade to version 2.0 or later.

Ver.2.0**Compatible with Wireless UR mode types setting function**

Switching of UR type (UR1 / UR2 / UR3 / UR4) of UR servo can be set wirelessly (T10PX).

- * T10PX also needs to be upgraded to Ver.2.0 or later.
- * Switching from normal to UR / SR of UR servo can only be done by wire.
- * Refer to the T10PX manual for how to set the wireless parameters.

