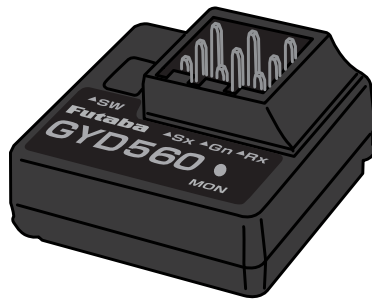


Gyro for RC drift cars

GYD560

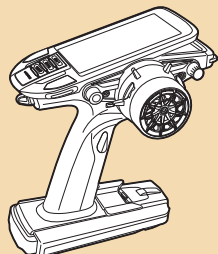


Software Update Functions

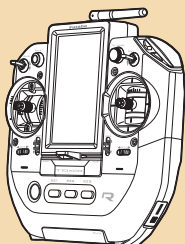
Updating the GYD560 using a transmitter

Required for update (Purchase separately)

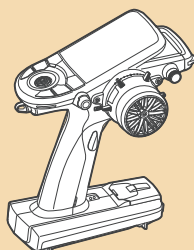
T10PX (R)



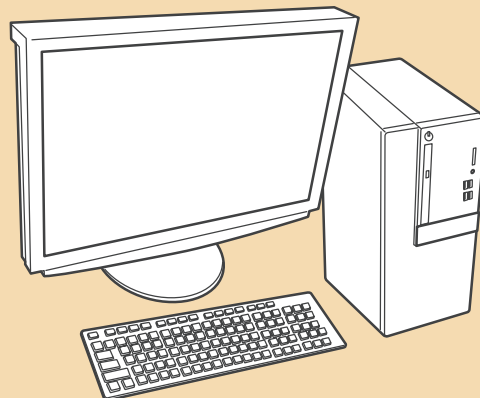
T10XCR



T6PV



*The latest version



PC

(Access is possible by the web)



Connection cable

(Included with GYD560)



microSD card

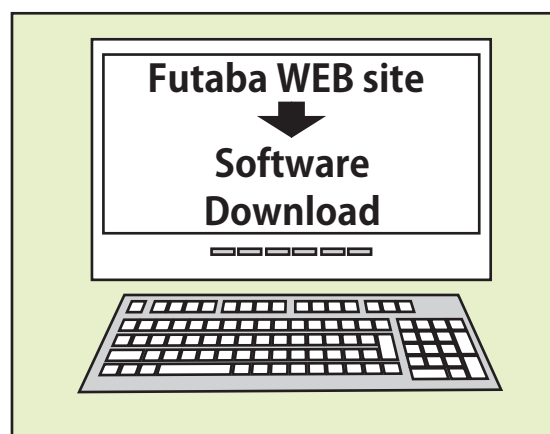
SD and SDHC standard microSD cards
(sold separately)

Updating procedure

1. Download the zip file of the update data from our website or your local distributor's website.

<https://futabausa.com/>

2. Extract the zip file on your computer.

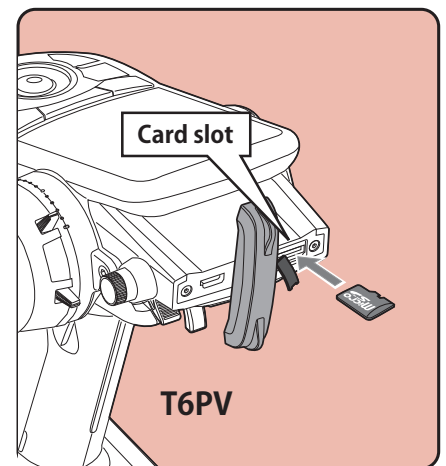
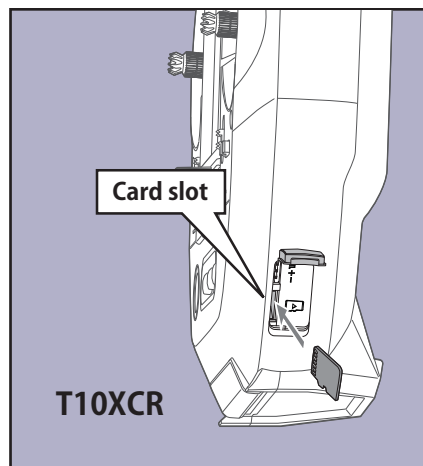
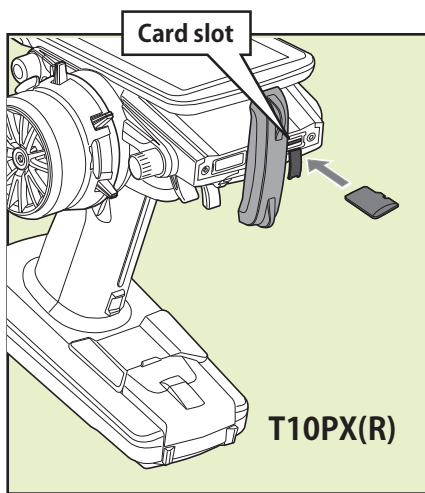


- 3.** Insert the micro SD card into the PC and copy the FUTABA folder expanded on the PC to the micro SD card.

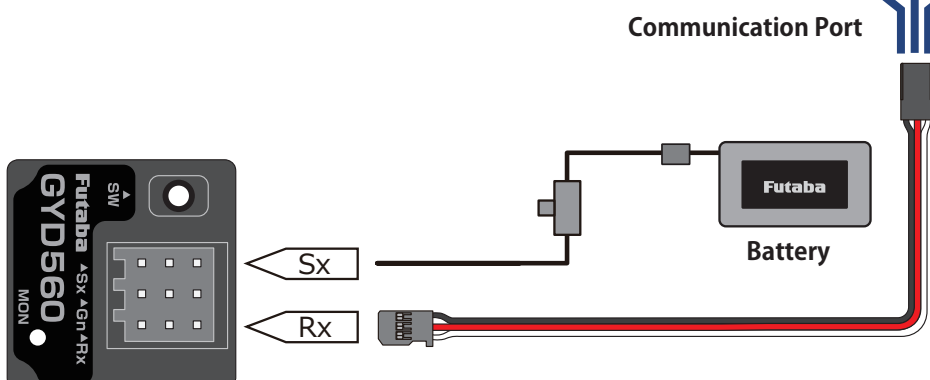
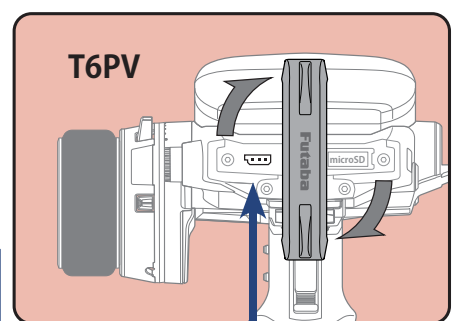
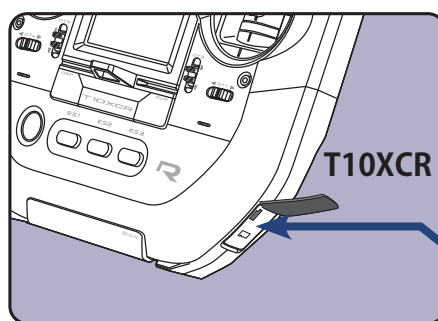
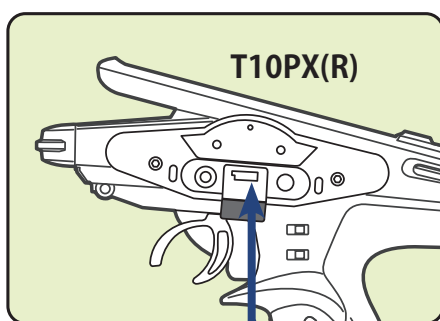
If you already have a microSD card FUTABA folder, overwrite it.



- 4.** Insert the microSD card with “FUTABA” folder that contained the update software into the SD card slot on your transmitter.

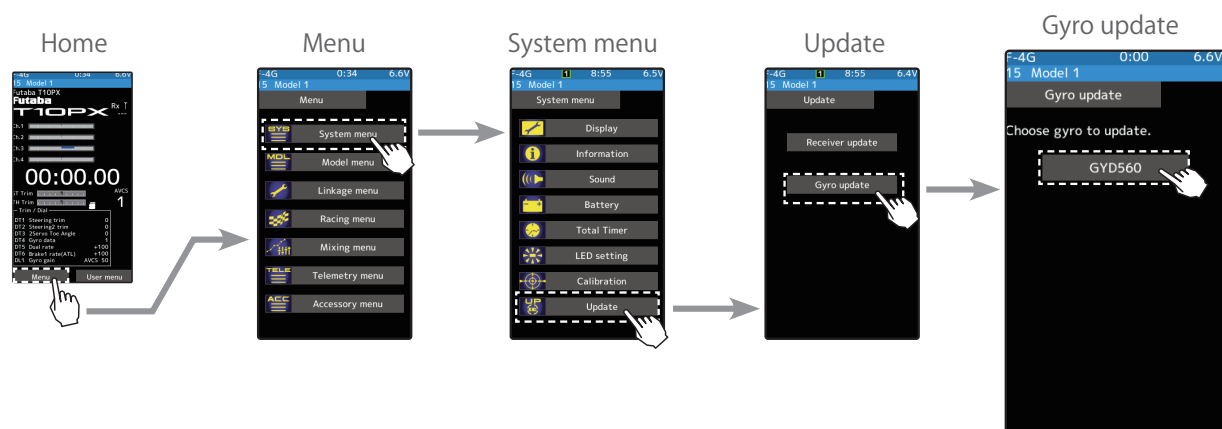


- 5.** Connect the GYD560 to be updated to the Communication Port of the transmitter.

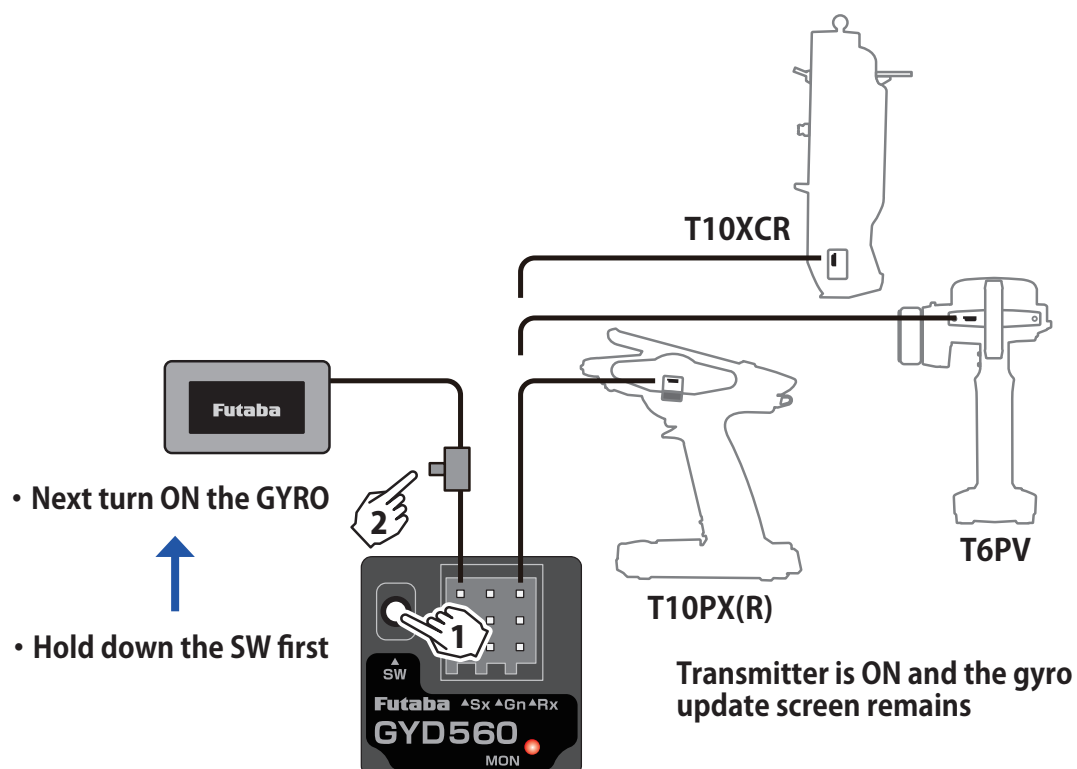


6. Turn on the transmitter and call "System Menu" ⇒ "Update" ⇒ "Gyro update" ⇒ "GYD560".

***T10PX(R) and T10XCR also need to be updated to the latest version.**



7. Put the gyro ready for update. (Transmitter is ON and the gyro update screen remains)



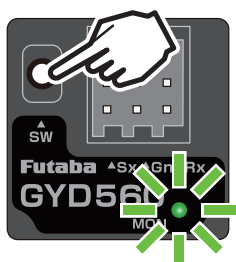


- Keep pressing SW

- LED **Red** light



- After 3 seconds
LED **Orange** light

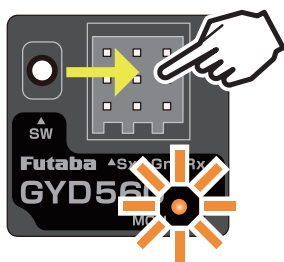


- Continue holding it for approximately
another 10 seconds

- **Green** light will flash briefly



- It will return to **Orange** light



- Release the SW

- **Orange** light

Update ready

If the LED lights up Orange, it has failed. Please retry.

8. Tap [Update]

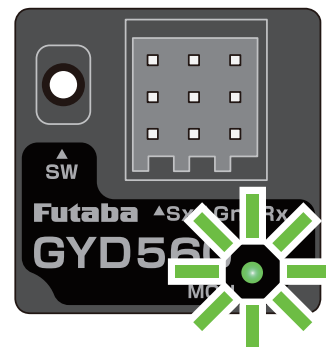
The update will begin. A progress bar will appear to indicate the progress. The gyro LED will light up green and flash green briefly each time data is received from the transmitter.

***Do not turn off the transmitter power while updating.**



9. When the update is complete, a message will be displayed and the gyro LED will remain lit green. Turn off the gyro power.

Before using, check that it is operating properly.



10. Disconnect the Gyro from the transmitter's Communication Port.

11. When finished, press and hold the home button on the transmitter to return to the home screen.

Error

If an error display appeared, reinstall the update from the beginning.

- The gyro is not in the update wait state.
- The cable is disconnected.
- The power has been turned off
- The micro SD card is not inserted in the transmitter.
- There is no data on micro SD card.

When using CIU-2/3 : Required for update

GYRO UPDATE (Update mode of GYD560)

This menu is used to adjust the update mode of the GYD560. The mode selected will be determined by the model of the CIU selected and personal preference. For example, when using the CIU-3, the user may select either the high speed or the slow speed modes. If using the CIU-2, only the slow speed mode is available.

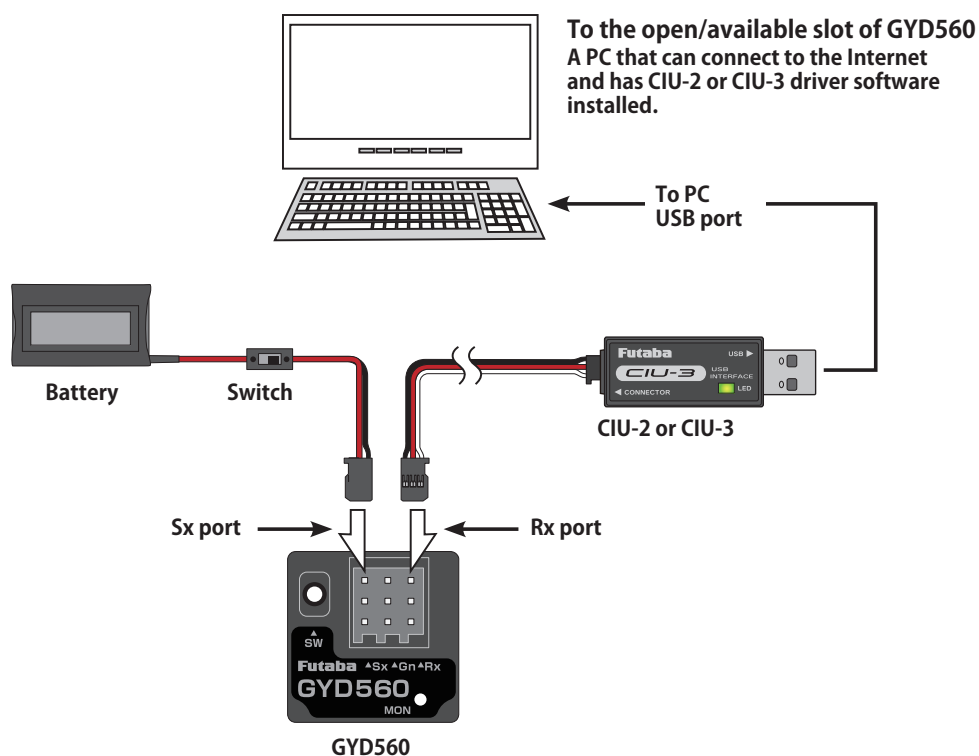
* The following optional products are required for the update.

- CIU-2 or CIU-3
- DSC cable for update
- Receiver battery

(1) Download GYD560 update file

Download the GYD560 update file from our website or your local distributor's website.

Connection diagram



(2) Preparation for update -1

Connect the GYD560, CIU-2 or CIU-3 to the PC with reference to the above connection diagram.


PC side


GYD560 side

Turn on the power of GYD560 while pressing SW

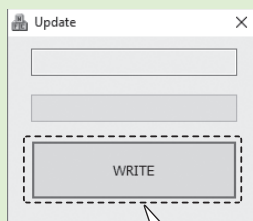
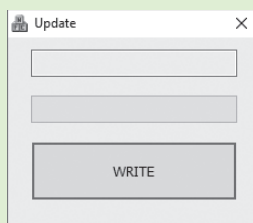
PC

Start an executable file by a PC.

Use CIU-2  Updater(Lowspeed).exe

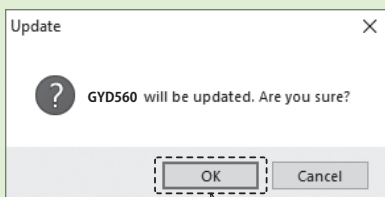
Use CIU-3  Updater(Highspeed).exe

Double-click



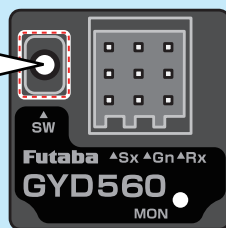
Click [WRITE]

WRITE



Click [OK]

OK



Press and hold SW for about 3 seconds.



CIU-2: Release SW

CIU-3



Release SW

(3) Selection of CIU (Speed)

Before turning on the power of GYD560, select the writing speed suitable for CIU-2 or CIU-3 to be used for updating.

[Selection method]

CIU-2

Turn on the power while pressing the SW of GYD560. The LED lights Red at first, then about 3 seconds later, Lights Orange, release the SW.

CIU-3

Turn on the power while pressing the SW of GYD560. The LED lights Red at first, then Lights Orange after about 3 seconds; press and hold SW for another 10 seconds, and release SW when the LED turns Green flashes briefly to Orange.

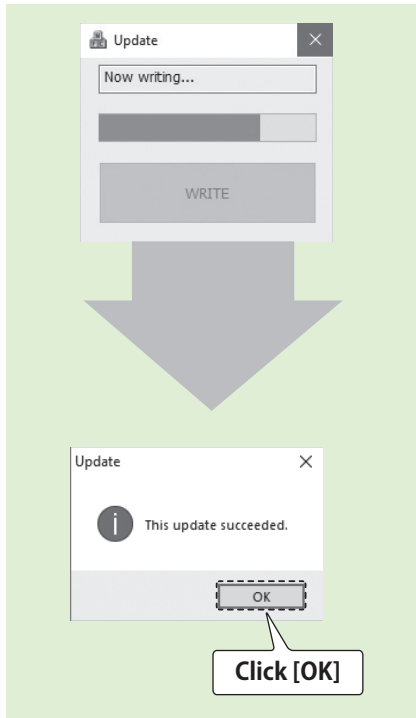
(4) Perform update

Click on the update file downloaded to the PC to update the GYD560.

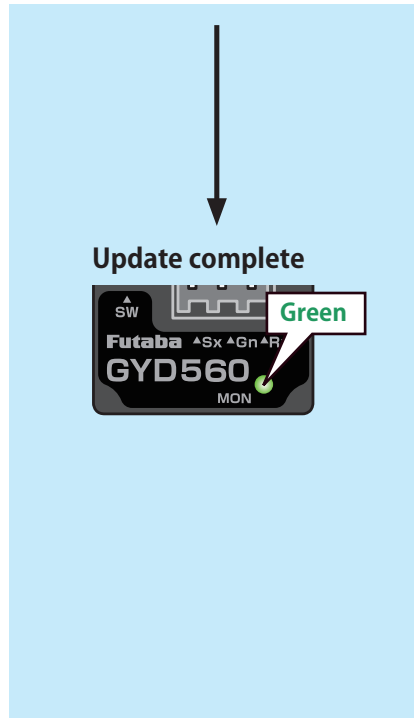
⚠ CAUTION

⊗ Do not turn off the power or remove the battery while updating. GYD560 may be damaged.

PC side

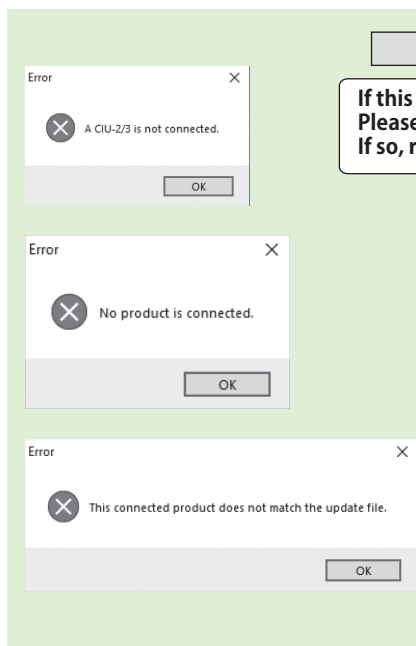


GYD560 side



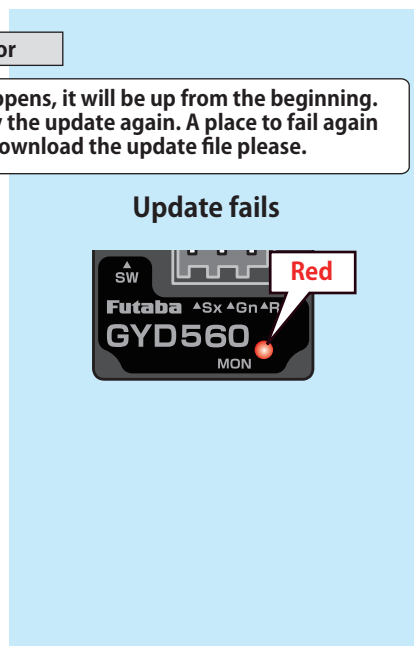
(5) Update complete

When the update is completed successfully, will turn **Green**.



Error

If this happens, it will be up from the beginning. Please try the update again. A place to fail again If so, re-download the update file please.



If the cable disconnects or a contact failure occurs during the update, the update stops halfway. In that case, please try updating again from the beginning.

Ver 2.0

Now compatible with the S-CD500KS knuckle servo.